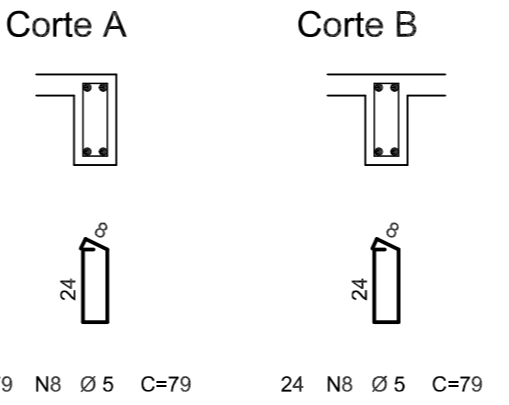
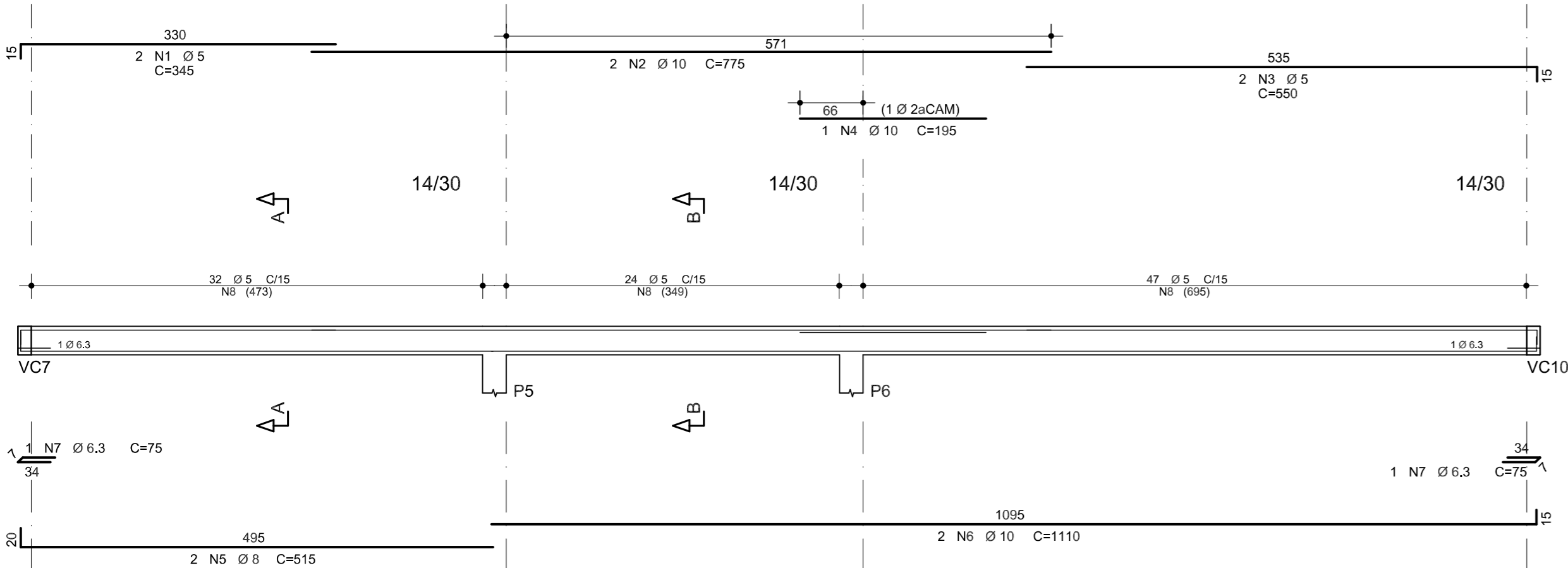
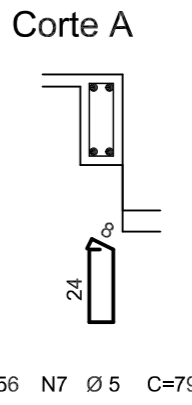
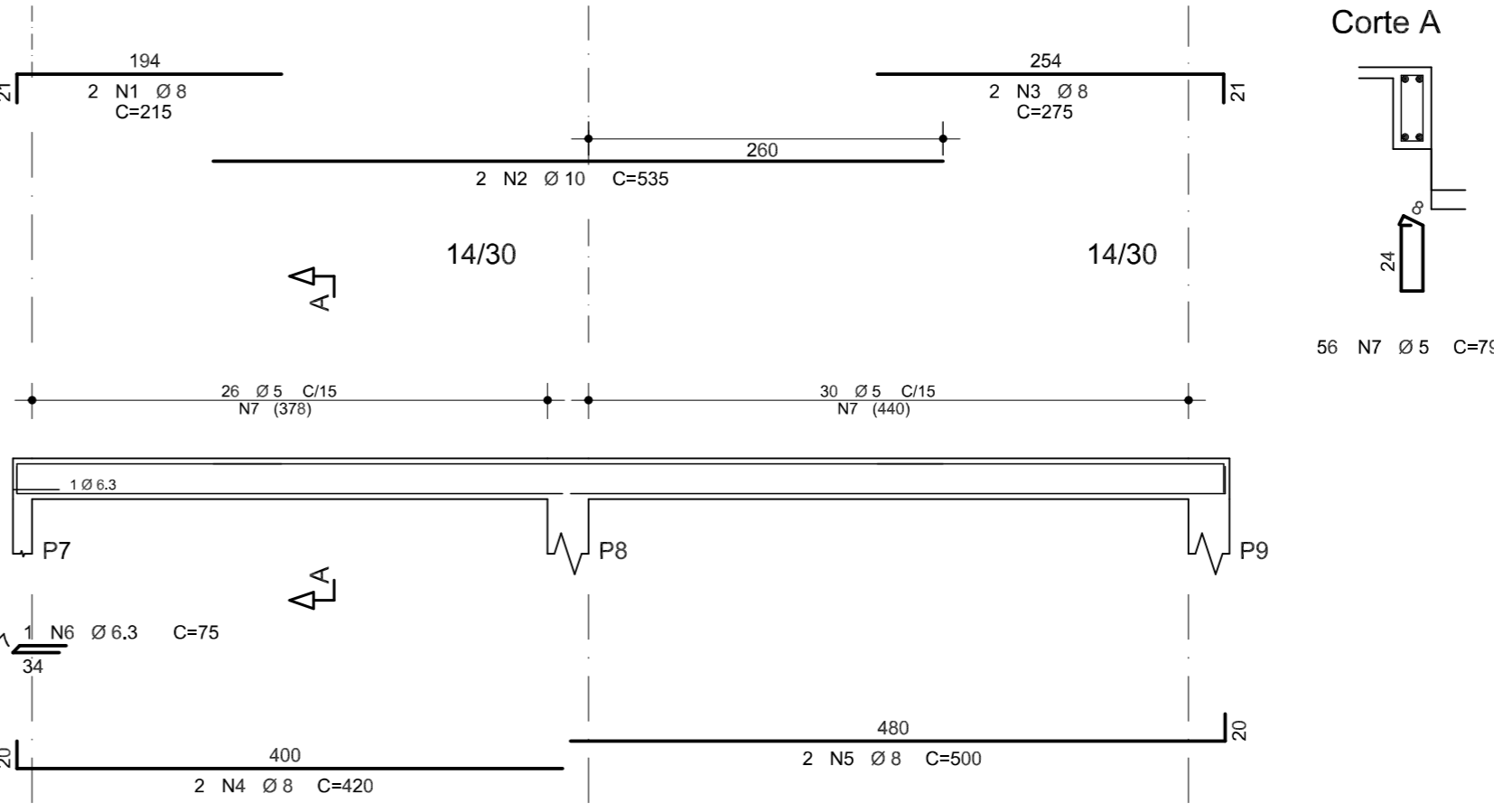


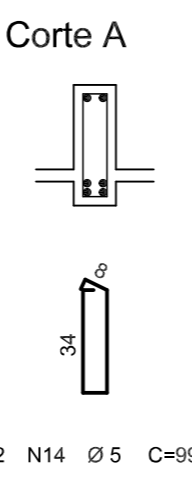
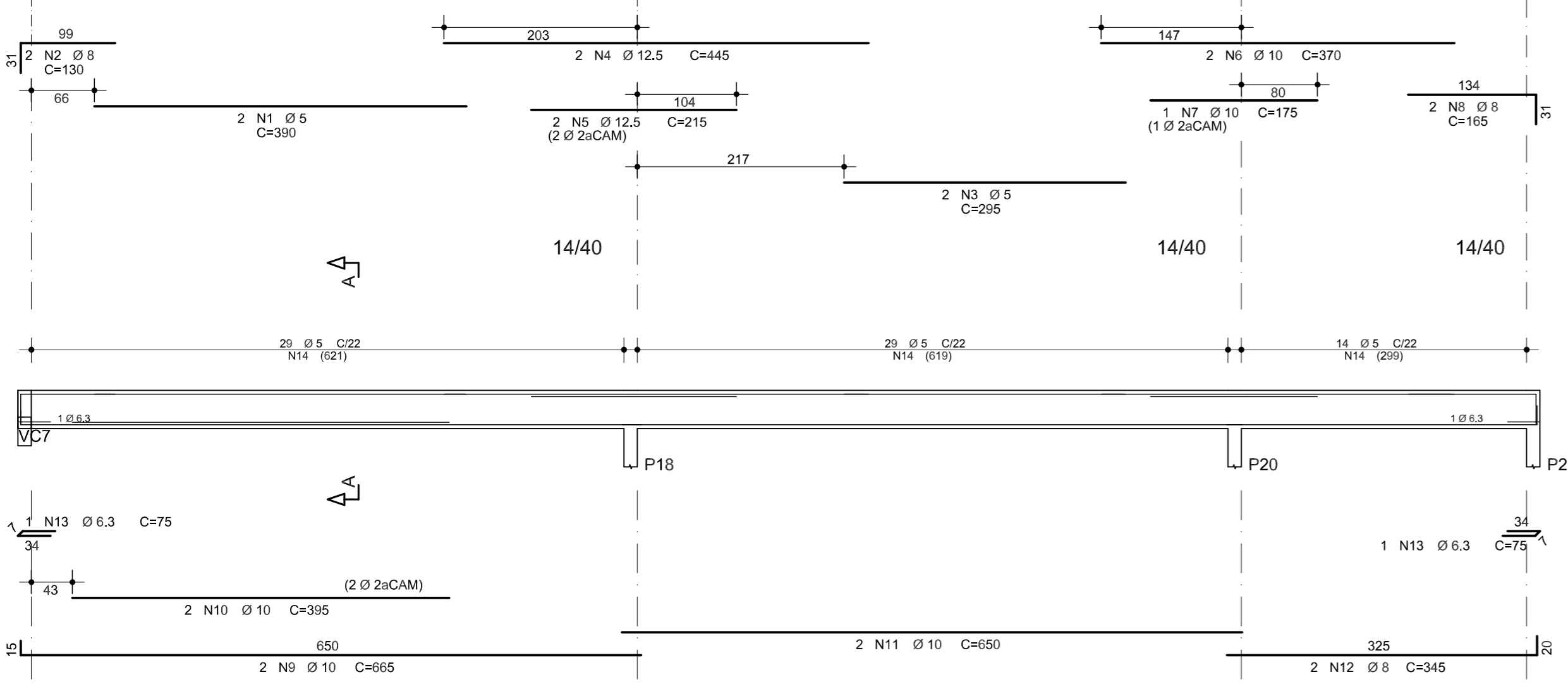
VC1



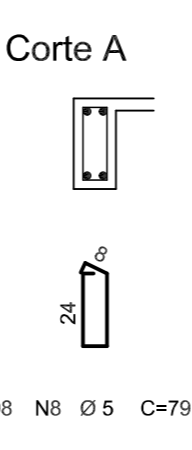
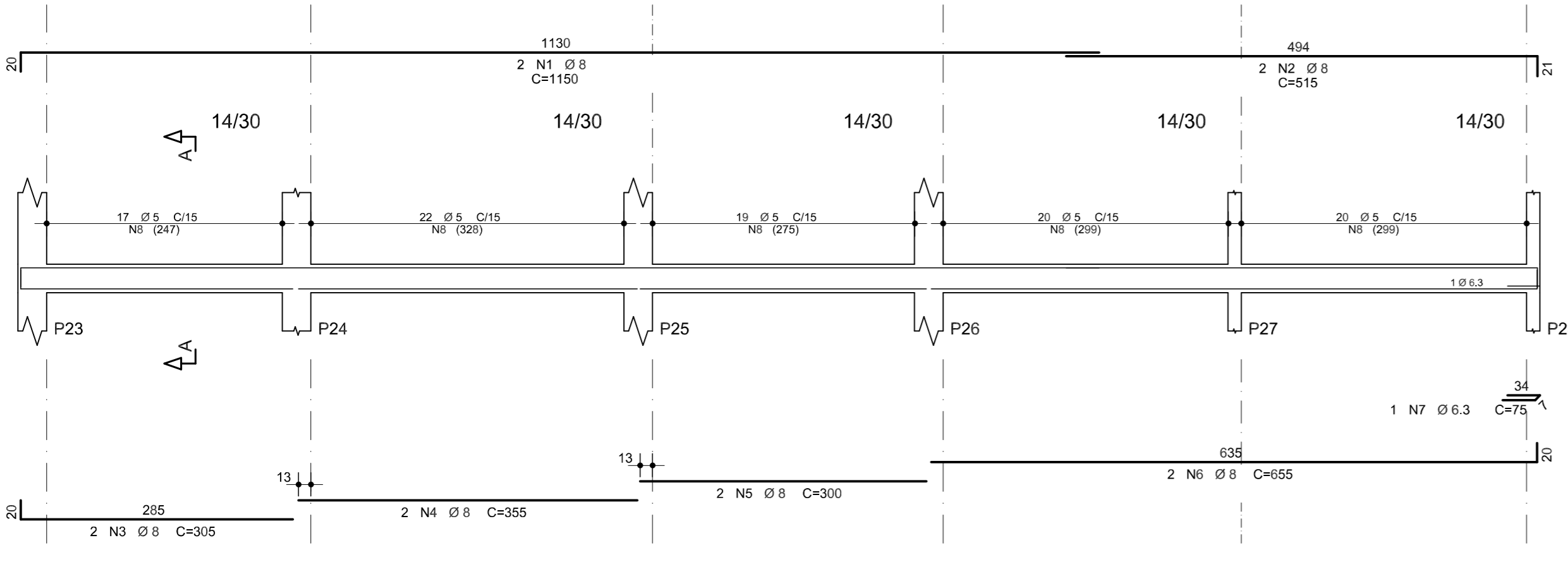
VC2



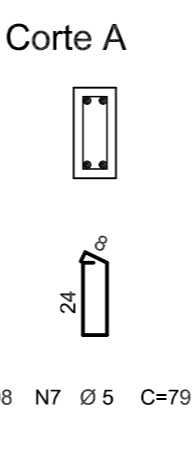
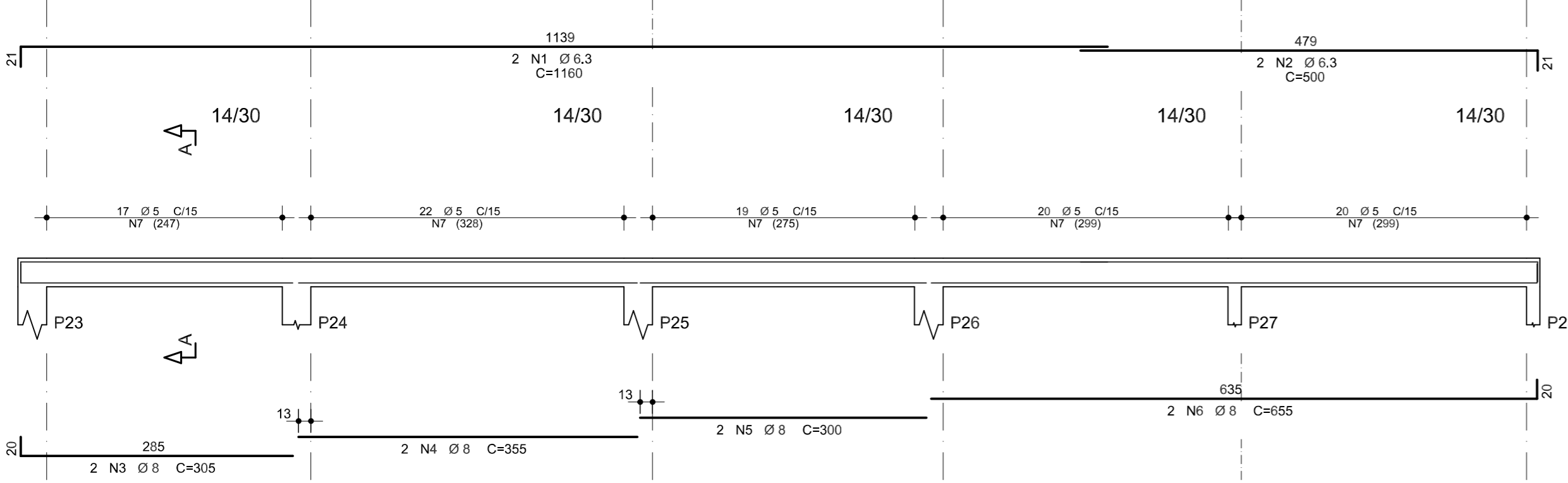
VC5



VC6



VR1



AÇO	POS	BIT (mm)	QUANT	COMPRIMENTO	
				UNIT (cm)	TOTAL (cm)
VC1					
60B	1	5	2	345	690
50A	2	10	2	775	1550
60B	3	5	2	550	1100
50A	4	10	1	195	195
50A	5	8	2	515	1030
50A	6	10	2	1110	2220
50A	7	6.3	2	75	150
60B	8	5	103	79	8137
VC2					
50A	1	8	2	215	430
50A	2	10	2	535	1070
50A	3	8	2	275	550
50A	4	8	2	420	840
50A	5	8	2	500	1000
50A	6	6.3	1	75	75
60B	7	5	56	79	4424
VC5					
60B	1	5	2	390	780
50A	2	8	2	130	260
60B	3	5	2	295	590
50A	4	12.5	2	445	890
50A	5	12.5	2	215	430
50A	6	10	2	370	740
50A	7	10	1	175	175
50A	8	8	2	165	330
50A	9	10	2	665	1330
50A	10	10	2	395	790
50A	11	10	2	650	1300
50A	12	8	2	345	690
50A	13	6.3	2	75	150
60B	14	5	72	99	7128
VC6					
50A	1	8	2	1150	2300
50A	2	8	2	515	1030
50A	3	8	2	305	610
50A	4	8	2	355	710
50A	5	8	2	300	600
50A	6	8	2	655	1310
50A	7	6.3	1	75	75
60B	8	5	98	79	7742
VR1					
50A	1	6.3	2	1160	2320
50A	2	6.3	2	500	1000
50A	3	8	2	305	610
50A	4	8	2	355	710
50A	5	8	2	300	600
50A	6	8	2	655	1310
50A	7	6.3	1	75	75
60B	8	5	98	79	7742

RESUMO AÇO CA 50-60			
AÇO	BIT (mm)	COMPR (m)	PESO (kg)
60B	5	383	59
50A	6.3	38	9
50A	8	149	59
50A	10	94	58
50A	12.5	13	13
Peso Total 60B =			59 kg
Peso Total 50A =			139 kg

Exco Faces
 Volume de concreto de VIGAS (m³) 3.2 3.1
 Taxa de armadura (kg/m³) 61.1 64.7

OBRA:	PROJETO DE REGULARIZAÇÃO E REFORMA CENTRO MUNICIPAL DE SAÚDE C/ ATENDIMENTO DE URGÊNCIA E EMERGÊNCIA	
PROPONENTE:	PREFEITURA MUNICIPAL DE SANTO ANTONIO DO LESTE CNPJ: 04.217.362/0001-90	
LOCAL DA OBRA:	RUA DAS FLORES, S/N., QUADRA 54	
SETOR/BAIRRO:	JARDIM NOVO CAMPO	
CIDADE:	SANTO ANTONIO DO LESTE, MT	
AUTOR DO PROJETO:	AMINADALB ALVES DE SOUZA JÚNIOR ENGENHEIRO CIVIL - CREA 120055453-1	
REPOSNÁVEL TÉCNICO:	AMINADALB ALVES DE SOUZA JÚNIOR ENGENHEIRO CIVIL - CREA 120055453-1	
DATA:	ESCALA:	INDICADA
21/09/2018		
DESENHO:	ASSUNTO	FOLHA N°
	PROJETO ESTRUTURAL COBERTURA: ARMAÇÃO DAS VIGAS 1/2	005
	ASS. RESPONSÁVEL TÉCNICO	ÁREAS E OCUPAÇÃO (%):
	AMINADALB A. SOUZA JR. CREA 120055453-1	TERRENO=6,400,00M²=100%
	REPRESENTANTE DO MUNICIPIO:	
	MIGUEL JOSÉ BRUNETTA PREFEITO MUNICIPAL	



RUA A. N. 367 JARDIM SANTA INEZ, SANTO ANTONIO DO LESTE-MT.
 FONE: (66) 3469-1080
 CEP: 78.628-000

RESERVADO À APROVAÇÃO