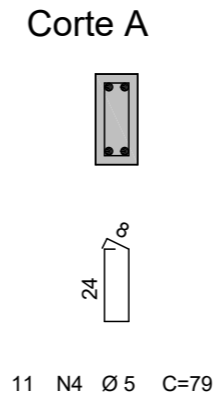
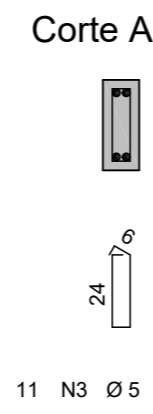
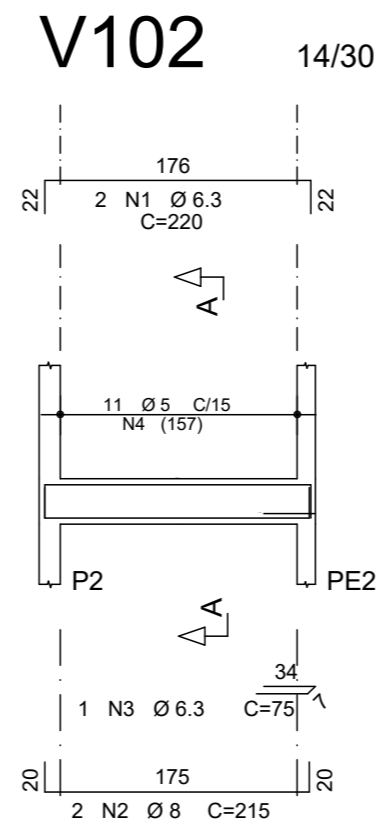
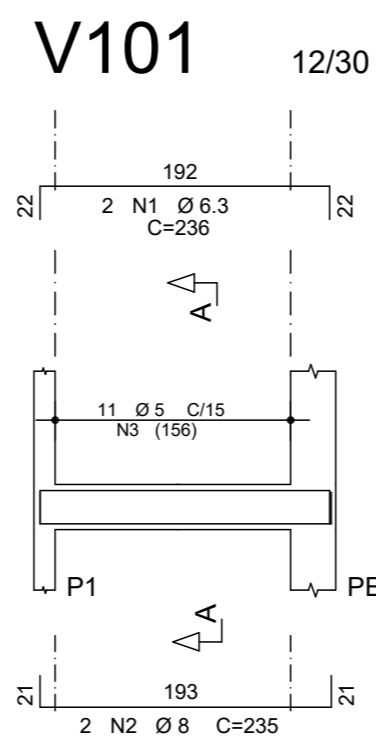
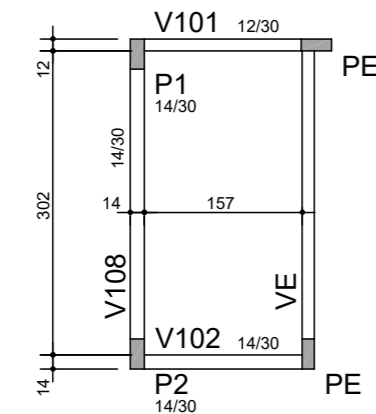
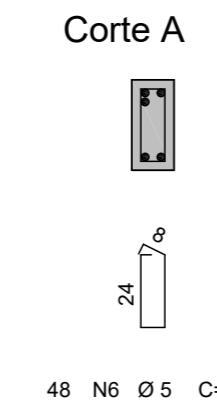
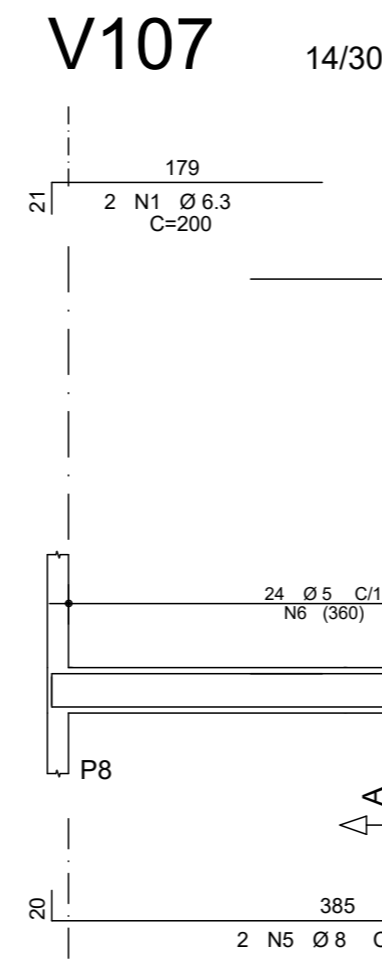
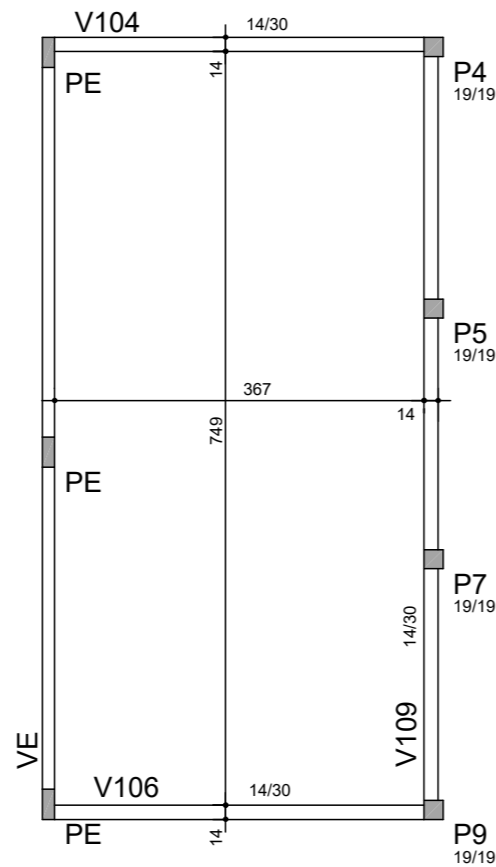
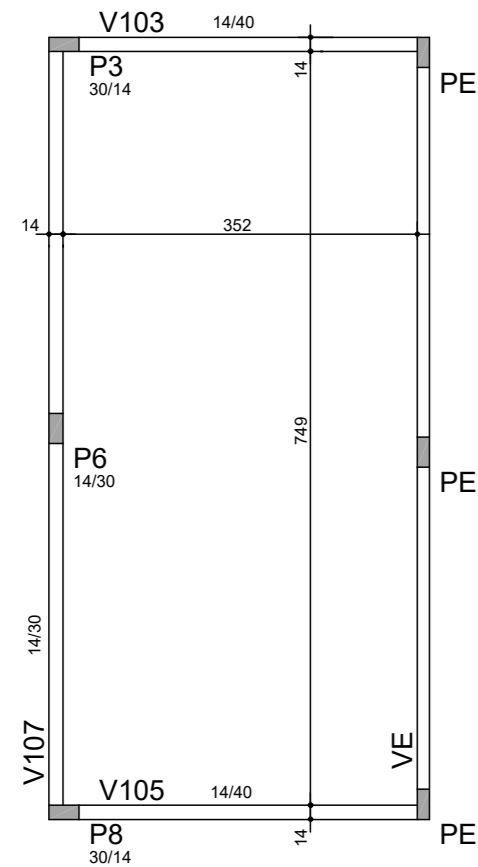


FORMA DOS BALDRAMES



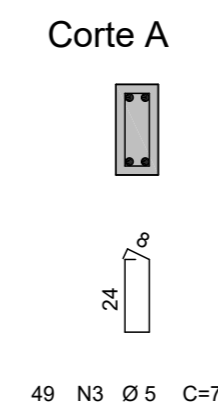
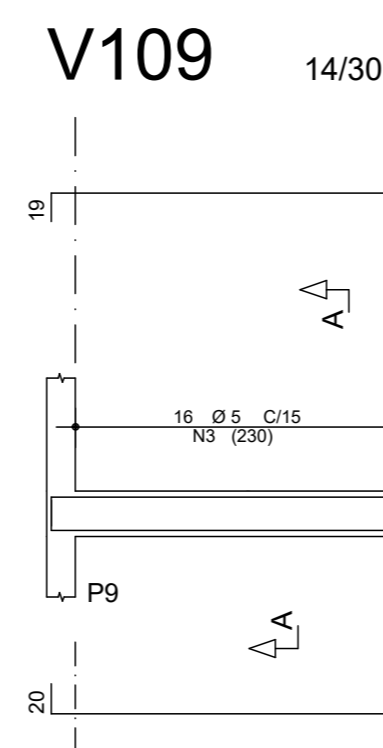
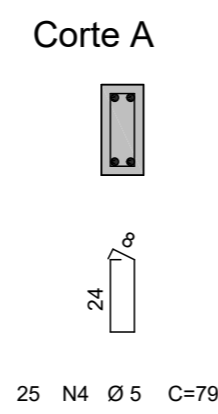
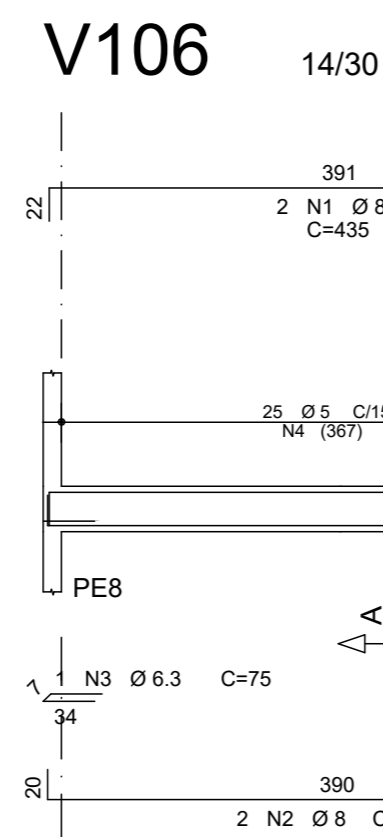
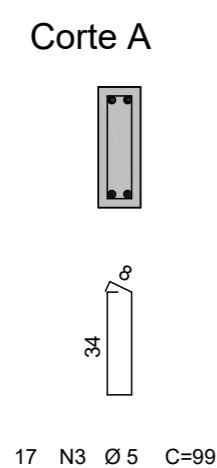
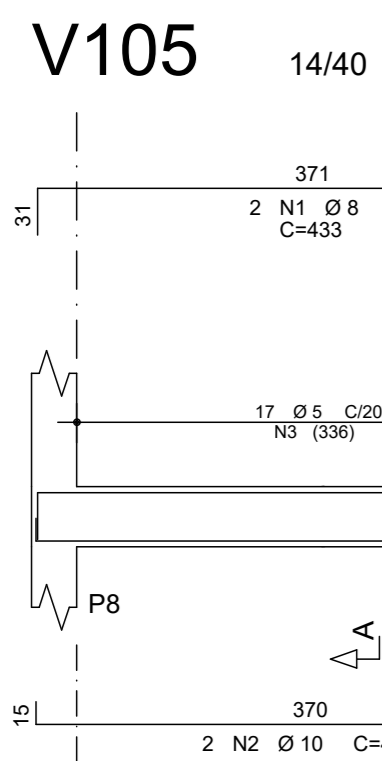
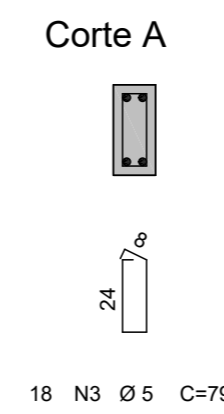
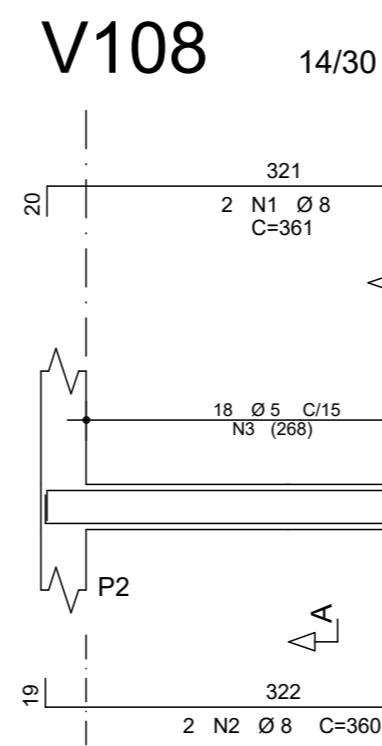
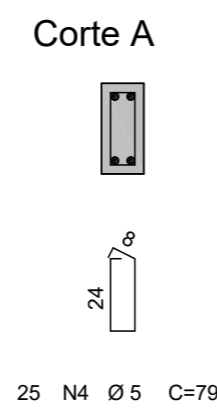
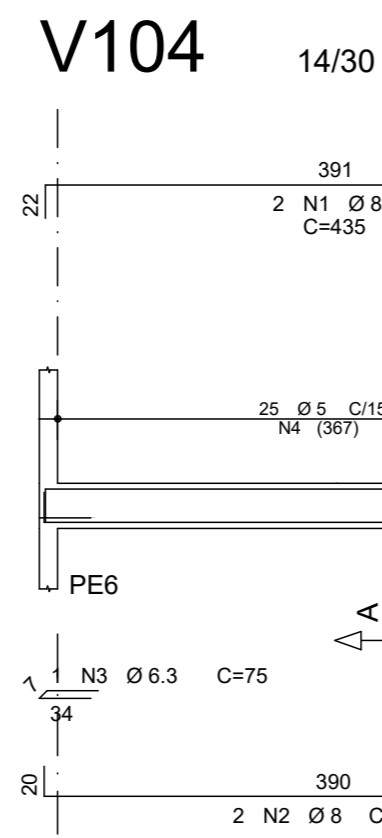
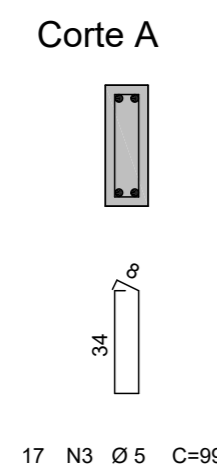
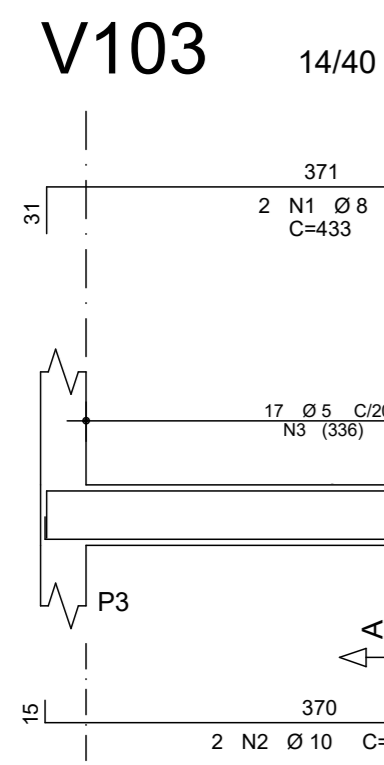
PC1
40/40



PE - PILAR EXISTENTE
VE - VIGA EXISTENTE

AÇO	POS	BIT (mm)	QUANT	COMPRIMENTO	
				UNIT (cm)	TOTAL (cm)
V101					
50A	1	6.3	2	236	472
50A	2	8	2	235	470
60B	3	5	11	75	825
V102					
50A	1	6.3	2	220	440
50A	2	8	2	215	430
50A	3	6.3	1	75	75
60B	4	5	11	79	869
V103					
50A	1	8	2	433	866
50A	2	10	2	400	800
60B	3	5	17	99	1683
V104					
50A	1	8	2	435	870
50A	2	8	2	430	860
50A	3	6.3	1	75	75
60B	4	5	25	79	1975
V105					
50A	1	8	2	433	866
50A	2	10	2	400	800
60B	3	5	17	99	1683
V106					
50A	1	8	2	435	870
50A	2	8	2	430	860
50A	3	6.3	1	75	75
60B	4	5	25	79	1975
V107					
50A	1	6.3	2	200	400
50A	2	6.3	2	276	552
50A	3	10	2	410	820
50A	4	10	1	225	225
50A	5	8	4	405	1620
60B	6	5	48	79	3792
V108					
50A	1	8	2	361	722
50A	2	8	2	360	720
60B	3	5	18	79	1422
V109					
50A	1	6.3	2	810	1620
50A	2	8	2	810	1620
60B	3	5	49	79	3871

RESUMO AÇO CA 50-60			
AÇO	BIT (mm)	COMPR (m)	PESO (kg)
60B	5	181	28
50A	6.3	37	9
50A	8	108	43
50A	10	26	16
Peso Total 60B =		28 kg	
Peso Total 50A =		68 kg	



PROJETO ESTRUTURAL

OBRA: REFORMA E AMPLIAÇÃO DO POSTO DE SAÚDE E ALOJAMENTO

PROPRIETÁRIO: MUNICÍPIO DE SANTO ANTONIO DO LESTE
CNPJ: 04.217.362.0001-90

ENDEREÇO DA OBRA: ALDEIA ÁGUA LIMPA - RESERVA INDÍGENA UBAWAWE
SANTO ANTONIO DO LESTE - MT

AUTOR DO PROJETO: AMINADALB ALVES DE SOUZA JUNIOR

REPRESENTANTE DO MUNICÍPIO: JOSÉ ARIMATEIA VIEIRA ALVES

ASSUNTO:
FORMA DOS BALDRAMES
ARMAÇÃO DAS VIGAS

AV. GOIÁS, 367 - JARDIM STA INÉS
SANTO ANTONIO DO LESTE - MT
FONE: (66) 3488-1080 - CEP 78.628-000

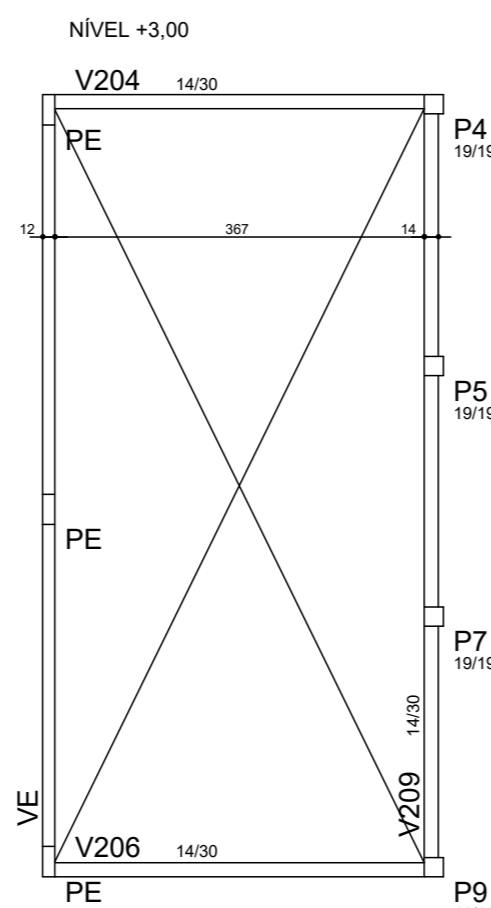
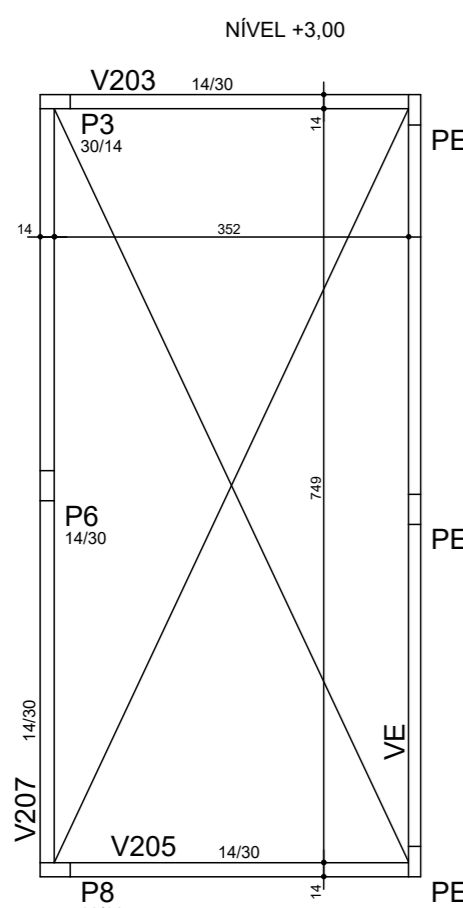
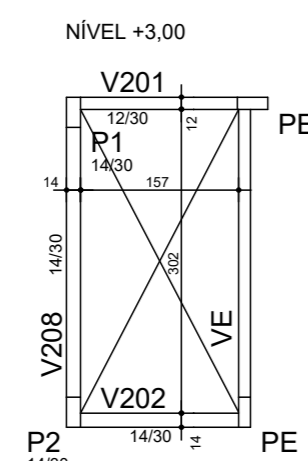
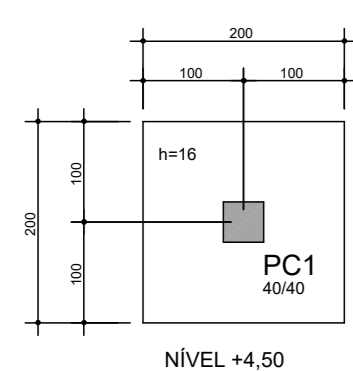
DATA: 10/08/2022

ESCALA: INDICADA

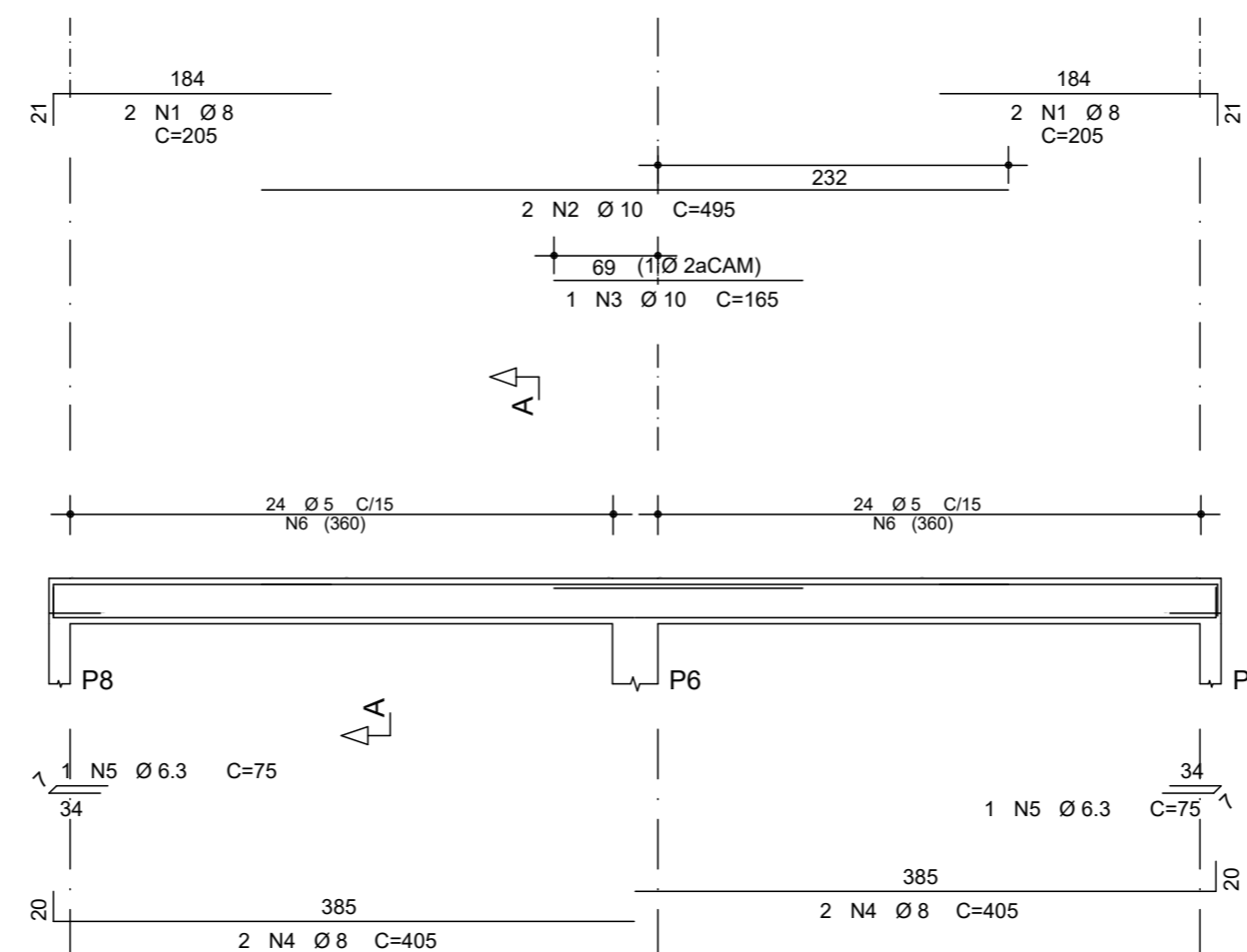
FOLHA Nº

02

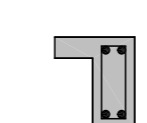
FORMA DA COBERTURA



V207 14/30

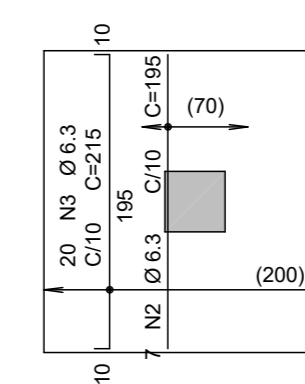
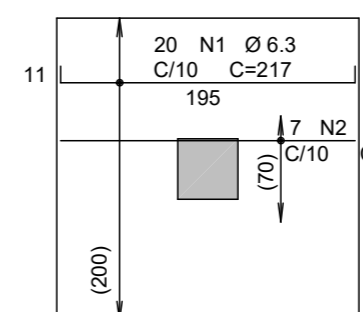


Corte A

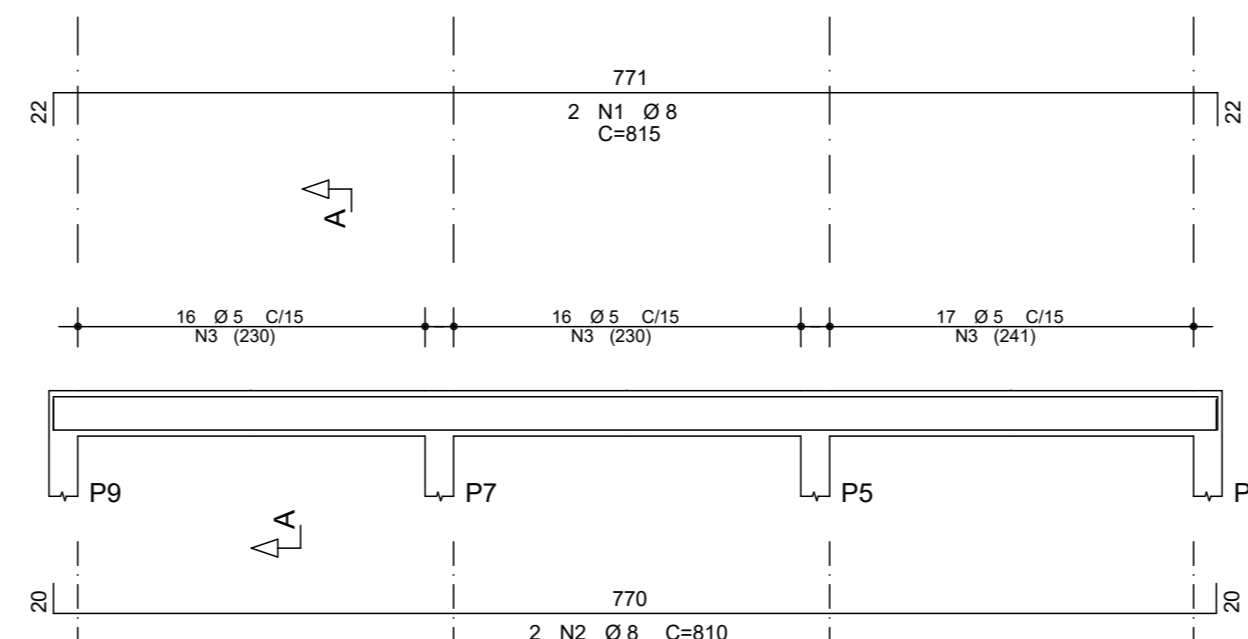


48 N6 Ø 5 C=79

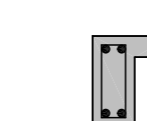
Armadura da laje Positiva



V209 14/30

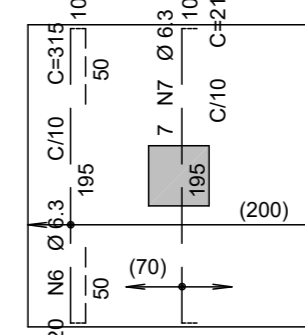
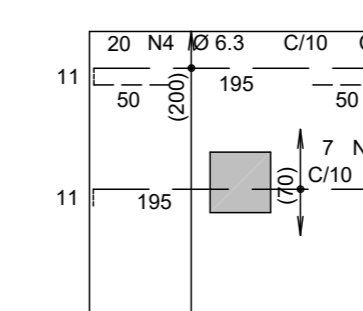


Corte A



49 N3 Ø 5 C=79

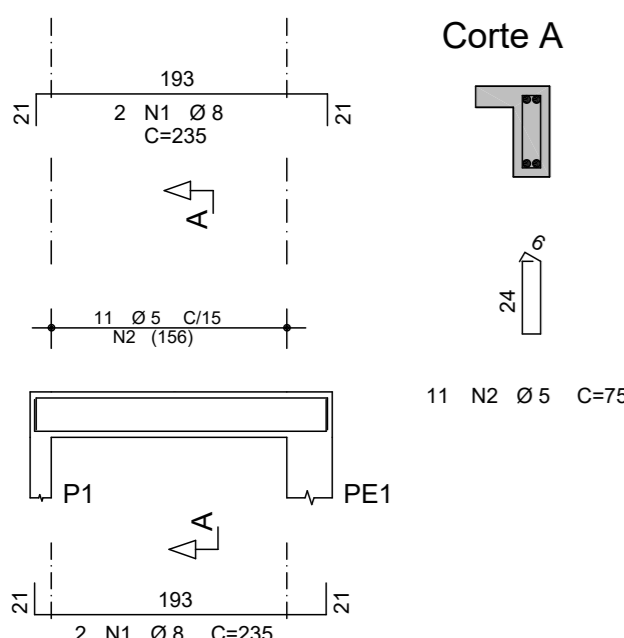
Negativa



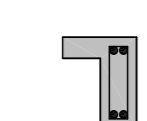
ACO	POS	BIT (mm)	QUANT	COMPRIMENTO UNIT (cm)	TOTAL (cm)
Armadura da laje					
50A	1	6.3	20	217	4340
50A	2	6.3	14	195	2730
50A	3	6.3	20	215	4300
50A	4	6.3	7	317	6340
50A	5	6.3	7	217	1519
50A	6	6.3	20	315	6300
50A	7	6.3	7	215	1505
V201					
50A	1	8	4	235	940
60B	2	5	11	75	825
V202					
50A	1	8	2	220	440
50A	2	8	2	215	430
60B	3	5	2	75	150
60B	4	5	11	79	869
V203					
50A	1	8	2	415	830
50A	2	8	2	410	820
60B	3	5	23	79	1817
V204					
50A	1	8	2	433	866
50A	2	10	2	425	850
60B	3	5	25	79	1975
V205					
50A	1	8	2	415	830
50A	2	10	2	410	820
60B	3	5	23	79	1817
V206					
50A	1	8	2	433	866
50A	2	10	2	430	860
60B	3	5	25	79	1975
V207					
50A	1	8	4	205	820
50A	2	10	2	495	990
50A	3	10	1	165	165
50A	4	8	4	405	1620
50A	5	6.3	2	75	150
60B	6	5	48	79	3792
V208					
50A	1	8	2	365	730
50A	2	8	2	360	720
60B	3	5	18	79	1422
V209					
50A	1	8	2	815	1630
50A	2	8	2	810	1620
60B	3	5	49	79	3871

RESUMO AÇO CA 50-60			
ACO	BIT (mm)	COMPR (m)	PESO (kg)
60B	5	184	28
50A	6.3	273	67
50A	8	132	52
50A	10	37	23
Peso Total 60B =		28 kg	
Peso Total 50A =		142 kg	

V201 12/30

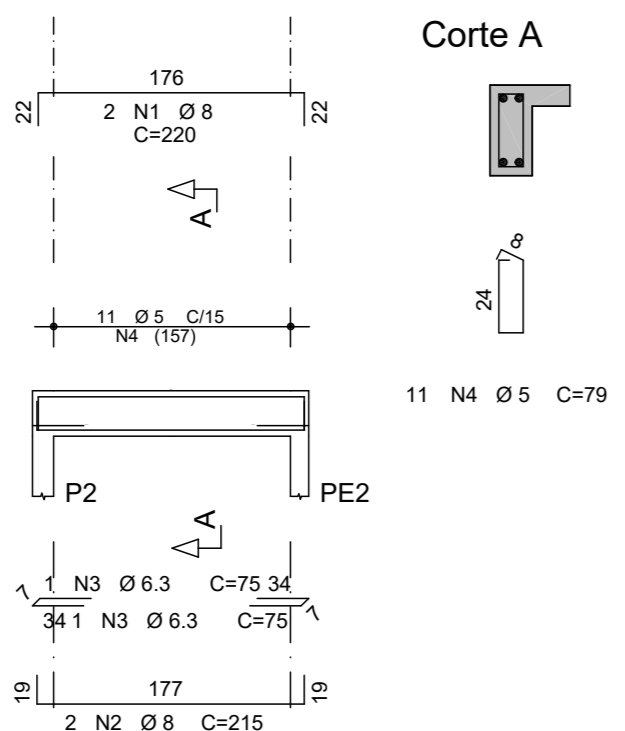


Corte A

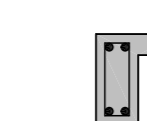


11 N2 Ø 5 C=75

V202 14/30

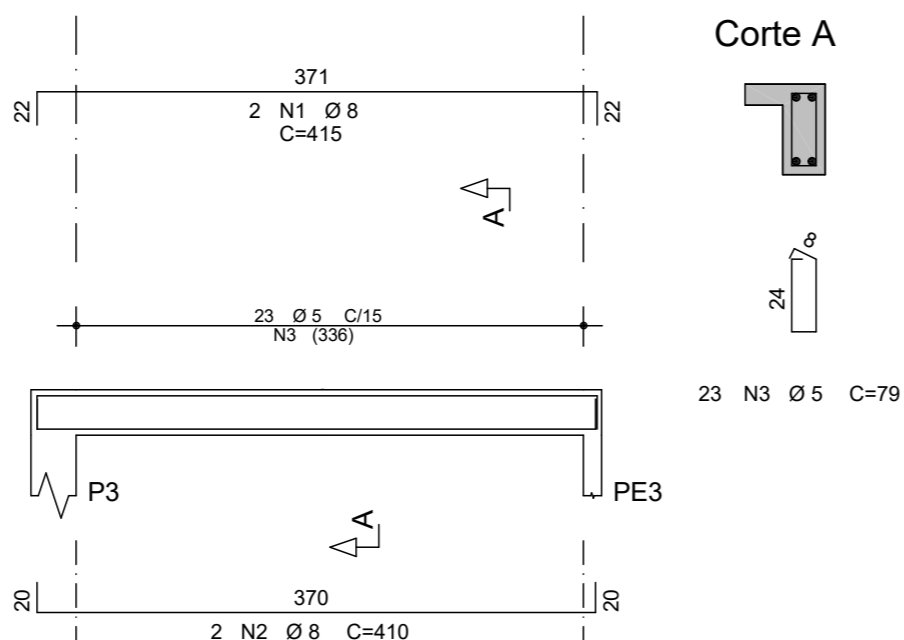


Corte A

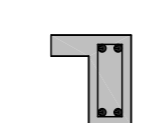


11 N4 Ø 5 C=79

V203 14/30

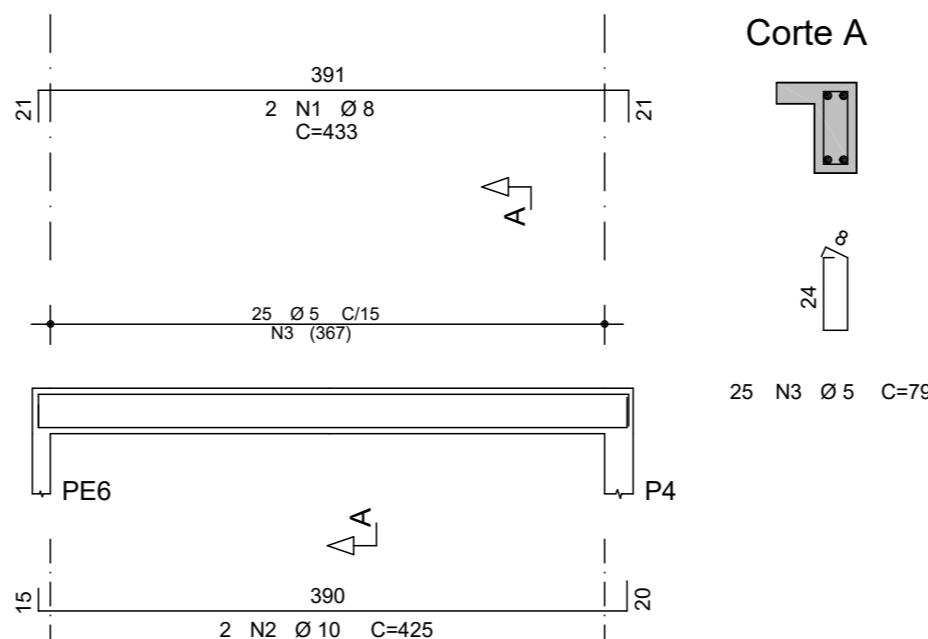


Corte A

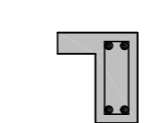


23 N3 Ø 5 C=79

V204 14/30

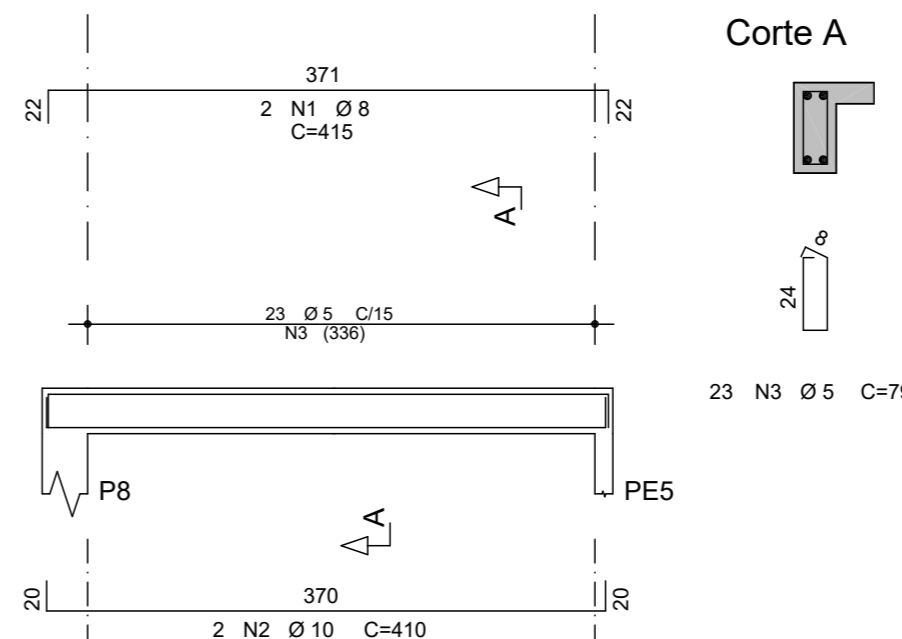


Corte A

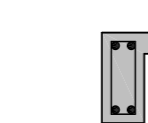


25 N3 Ø 5 C=79

V205 14/30

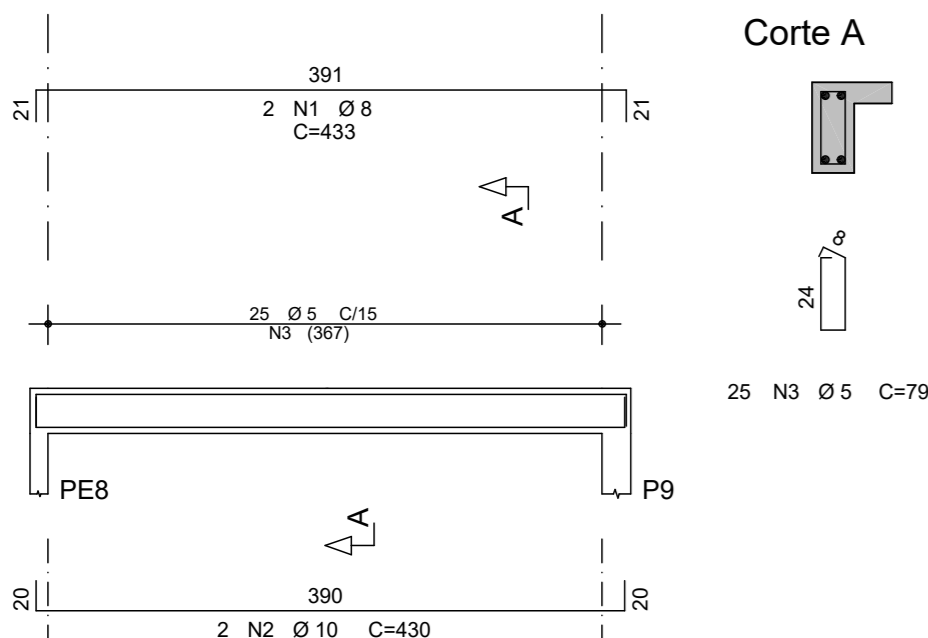


Corte A

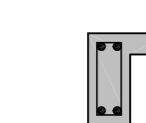


23 N3 Ø 5 C=79

V206 14/30

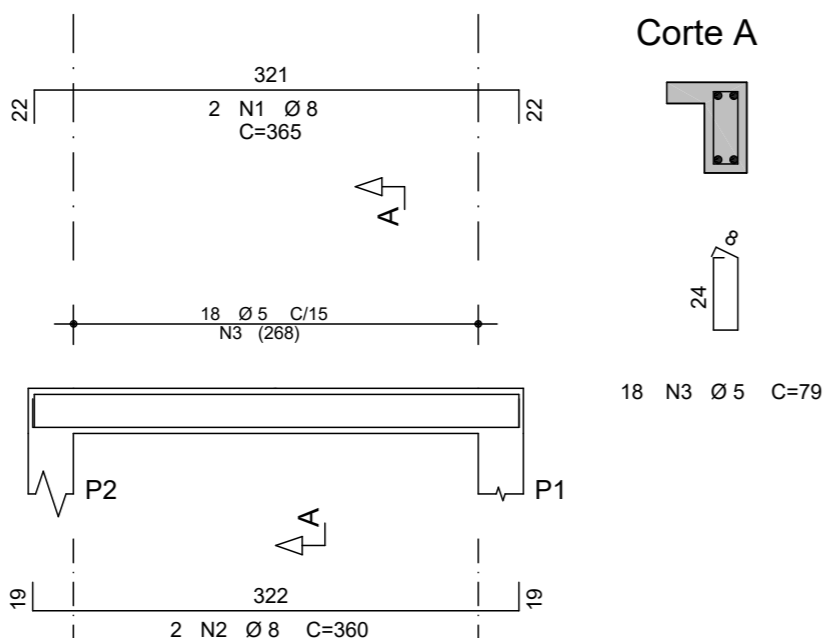


Corte A

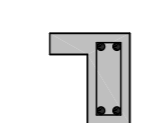


25 N3 Ø 5 C=79

V208 14/30

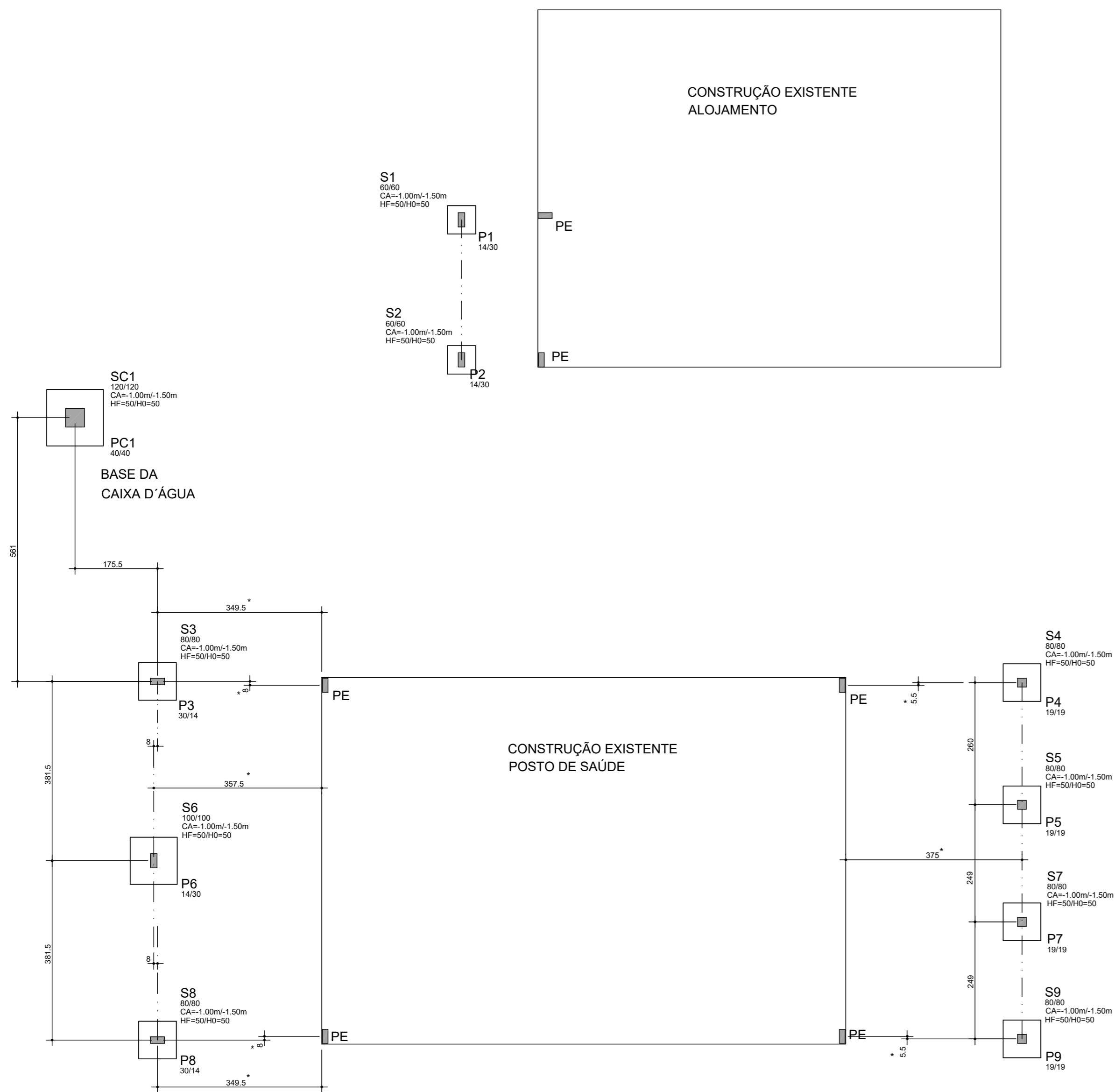


Corte A

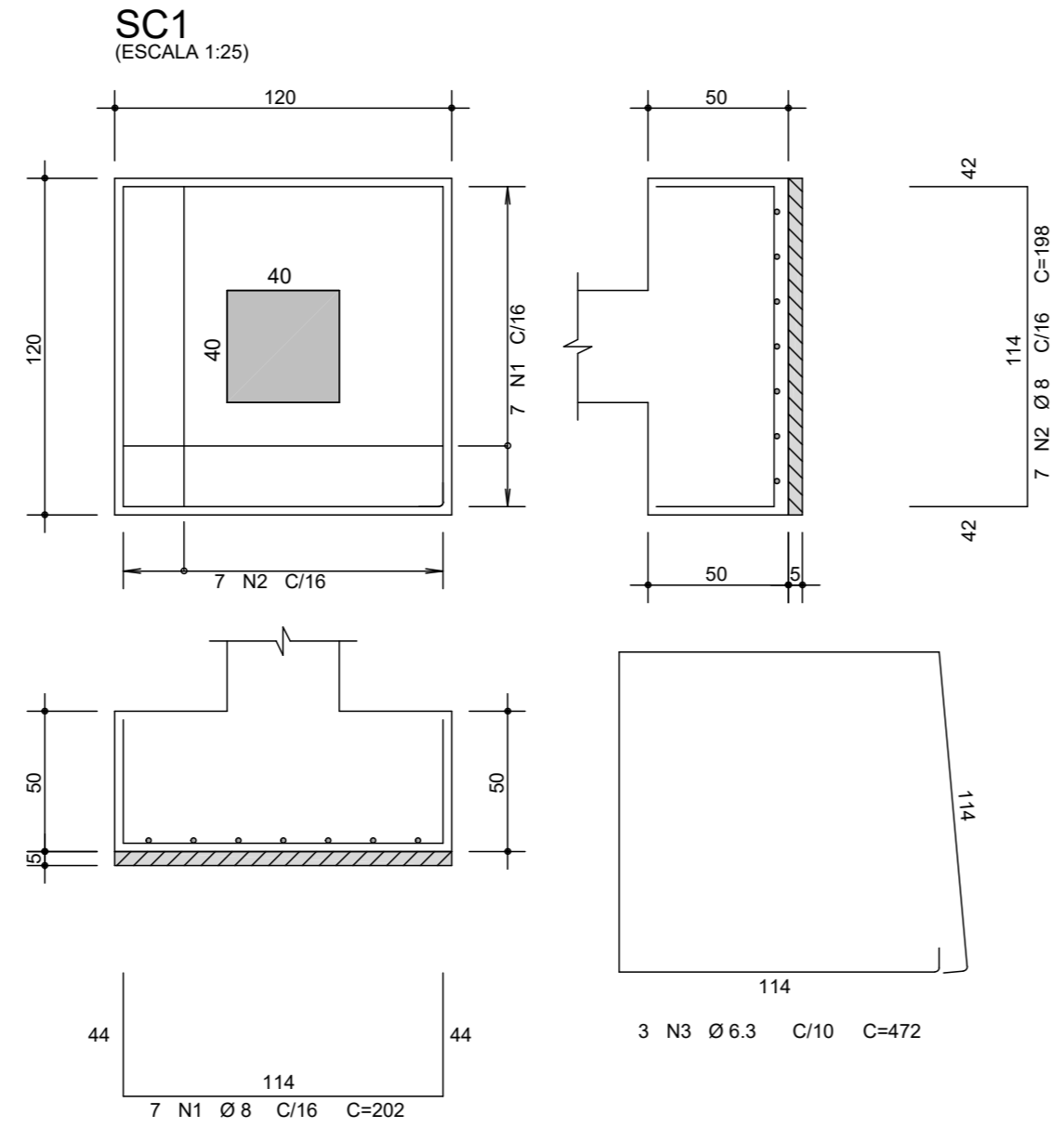
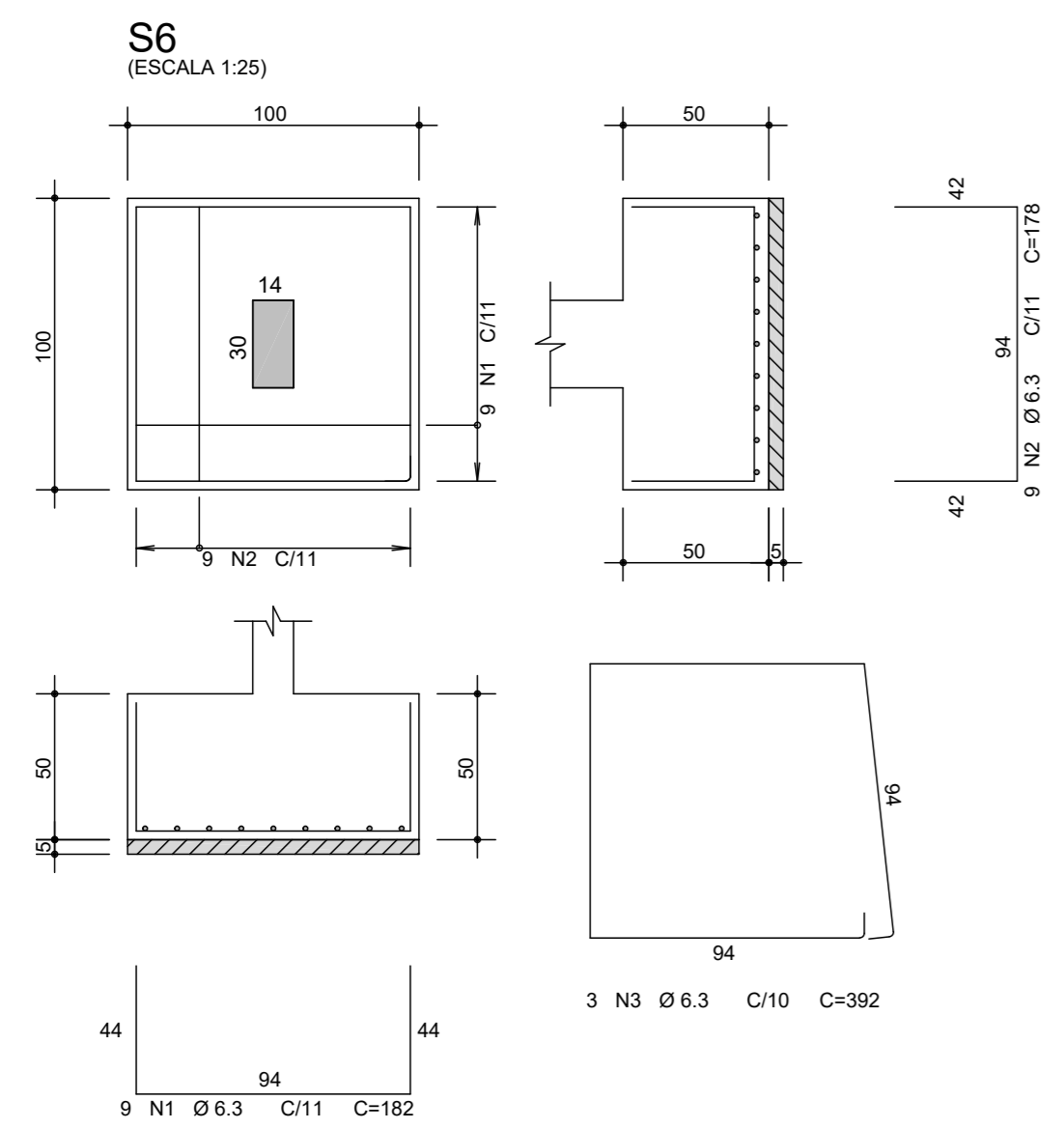
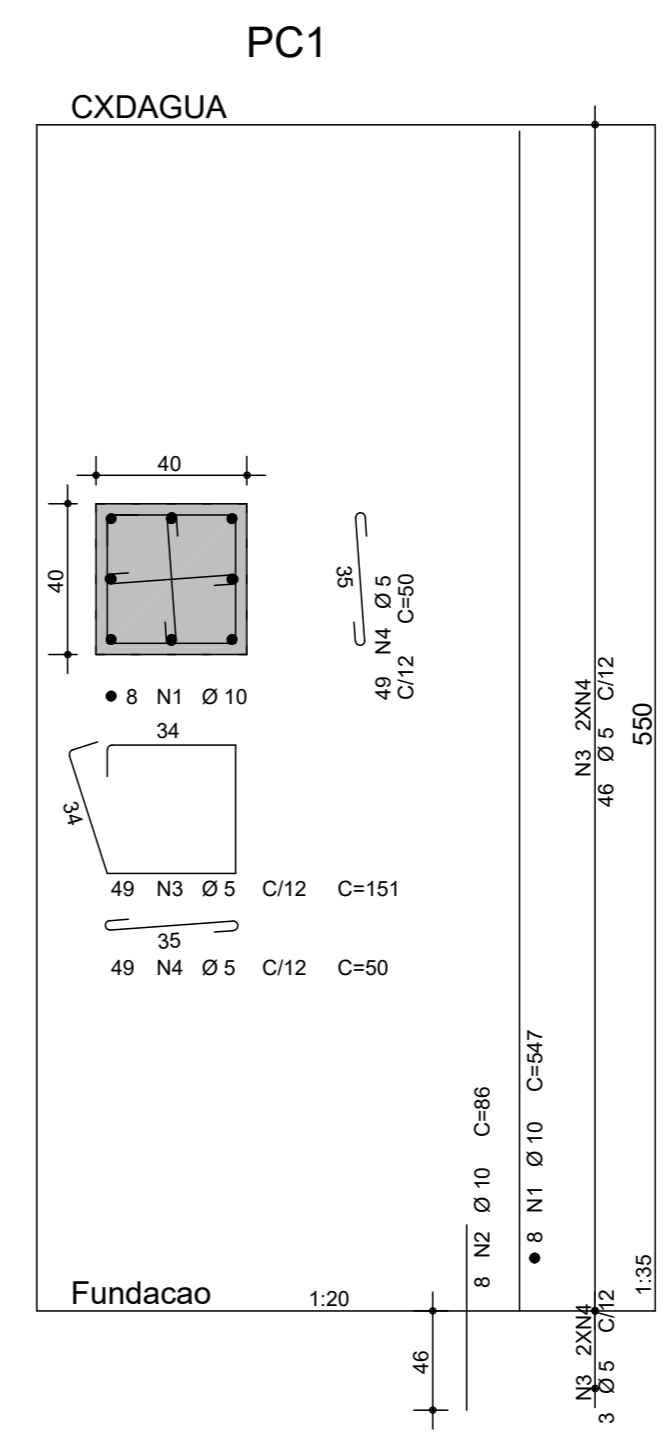
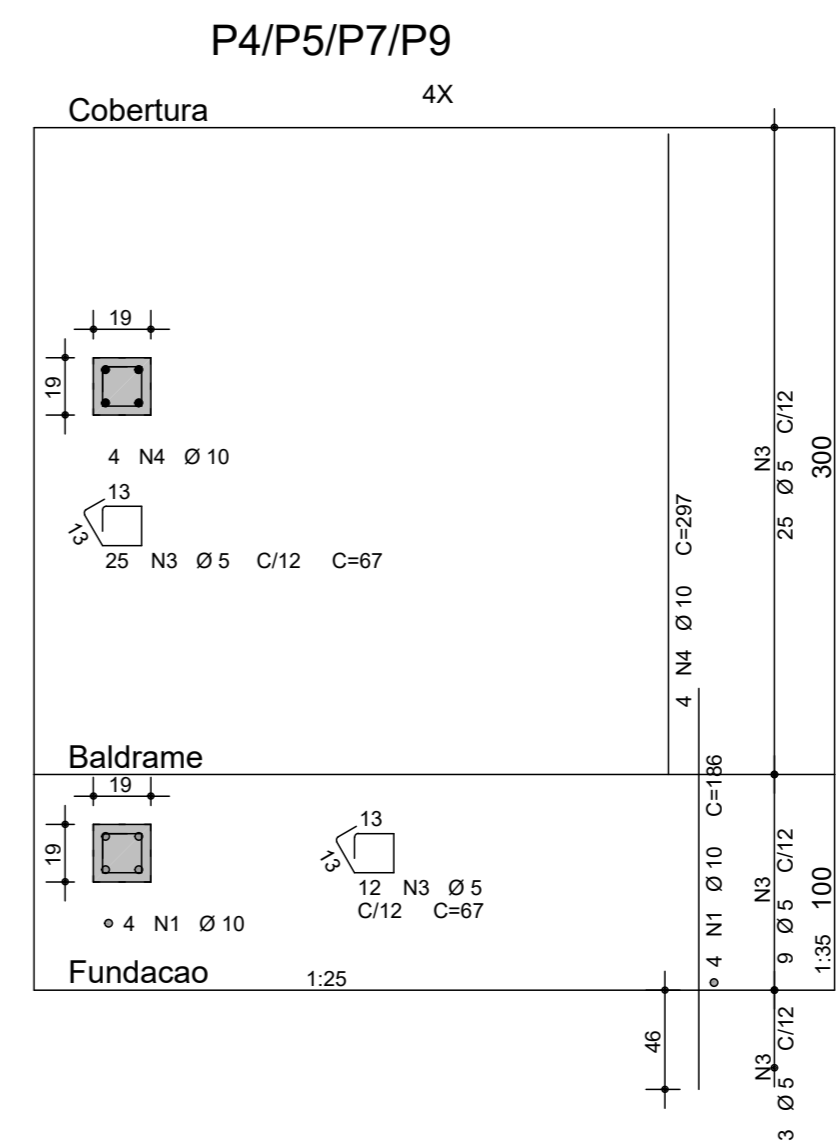
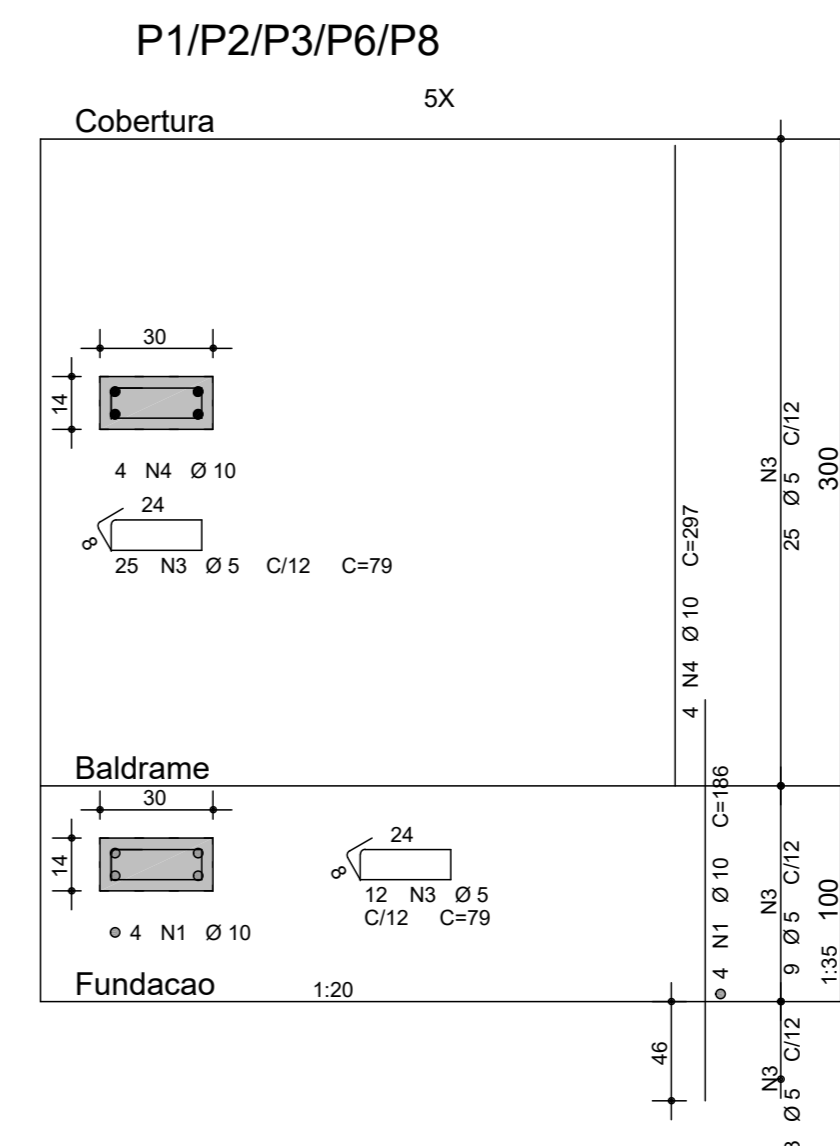
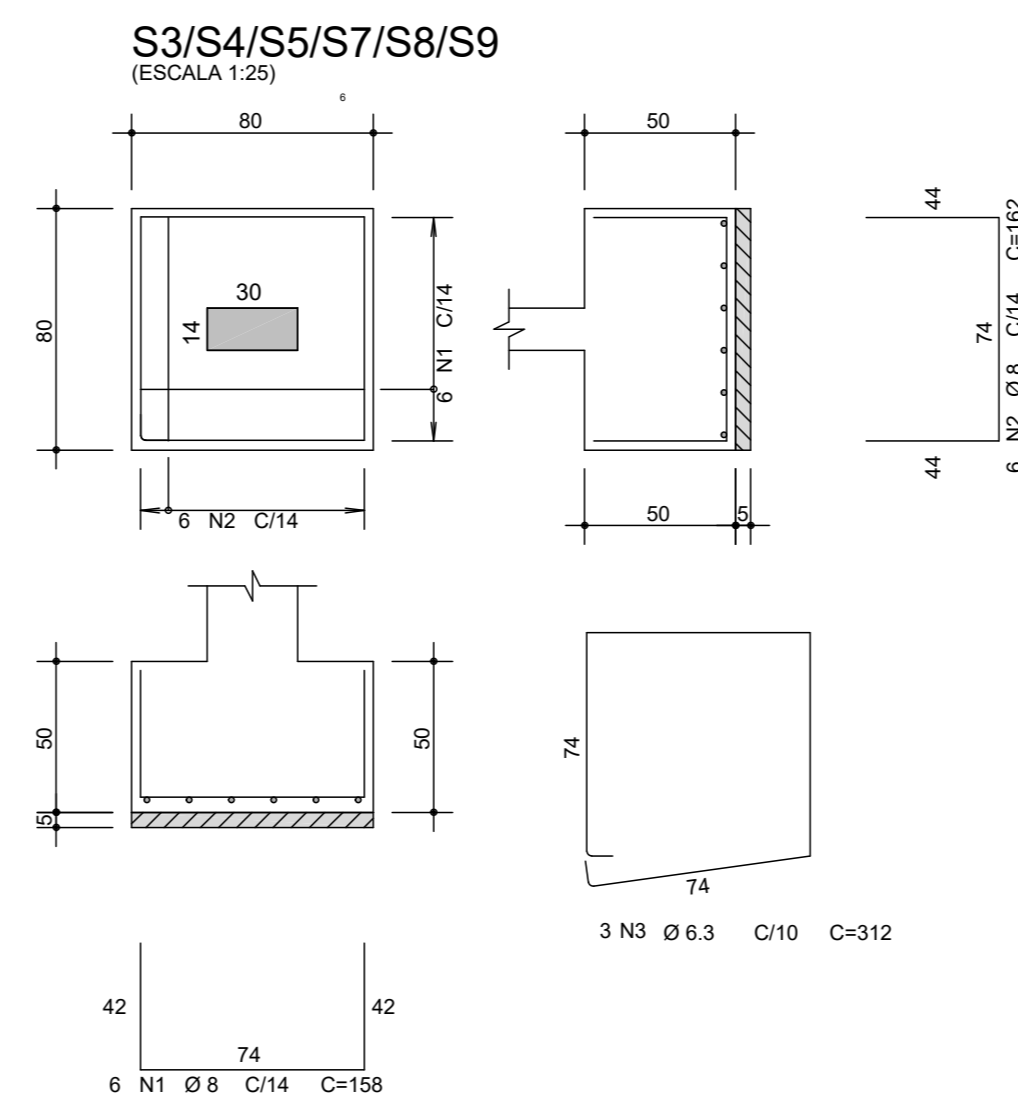
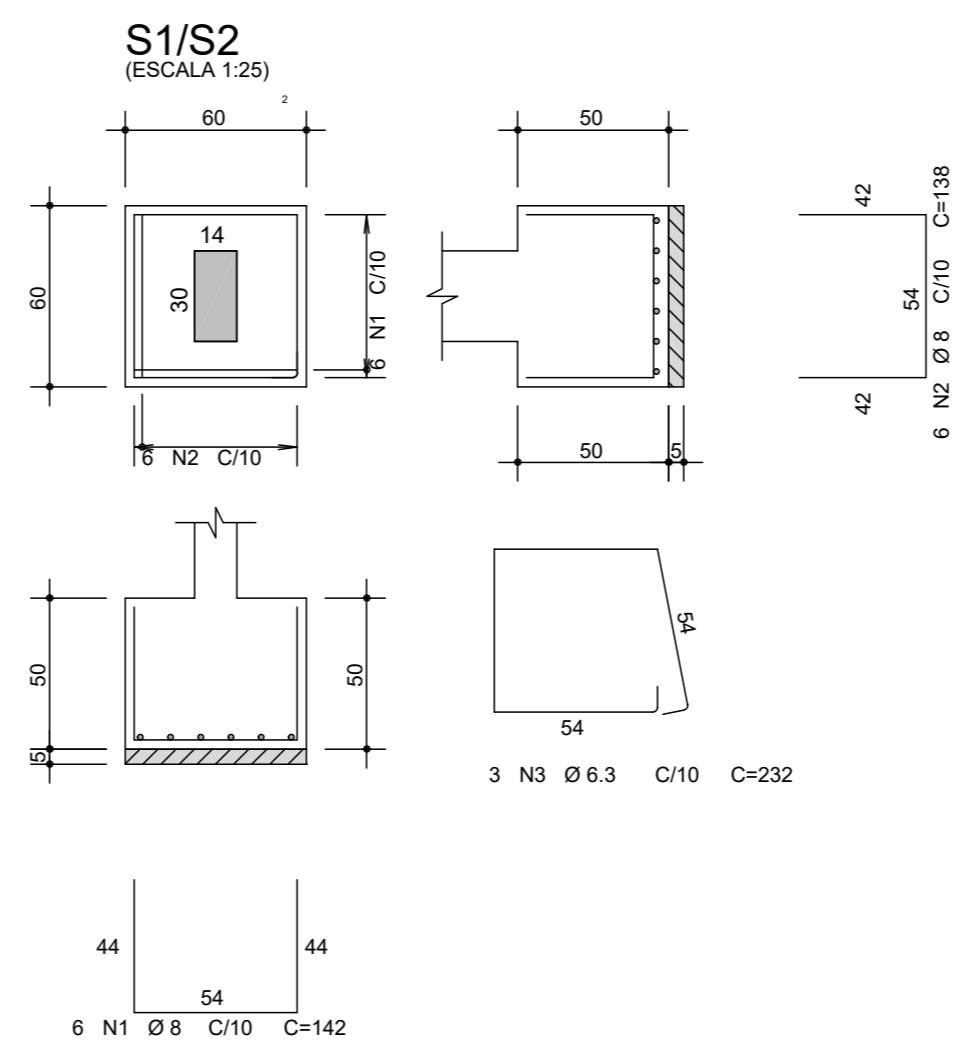


18 N3 Ø 5 C=79

PROJETO ESTRUTURAL	
OBRA:	REFORMA E AMPLIAÇÃO DO POSTO DE SAÚDE E ALOJAMENTO
PROPRIETÁRIO:	MUNICÍPIO DE SANTO ANTONIO DO LESTE CNPJ: 04.217.362.0001-90
ENDEREÇO DA OBRA:	ALDEIA ÁGUA LIMPA - RESERVA INDÍGENA UBAWAWE SANTO ANTONIO DO LESTE - MT
AUTOR DO PROJETO:	AMINADALB ALVES DE SOUZA JUNIOR
REPRESENTANTE DO MUNICÍPIO:	JOSÉ ARIMATEIA VIEIRA ALVES
ASSUNTO:	FORMA DA COBERTURA ARMAÇÃO DAS VIGAS
DATA:	10/08/2022
ESCALA:	INDICADA
AV. GOIÁS, 367 - JARDIM STA INÉS SANTO ANTONIO DO LESTE - MT FONE: (66) 3488-1080 - CEP 78.628-000	FOLHA Nº 03



PE - PILAR EXISTENTE
* - CONFERIR MEDIDAS NO LOCAL



AÇO	POS	BIT (mm)	QUANT	COMPRIMENTO	
				UNIT (cm)	TOTAL (cm)
S1/S2 (X2)					
50A	1	8	12	142	1704
50A	2	8	12	138	1656
50A	3	6.3	6	232	1392
S3/S4/S5/S7/S8/S9 (X6)					
50A	1	8	36	158	5688
50A	2	8	36	162	5832
50A	3	6.3	18	312	5616
S6					
50A	1	6.3	9	182	1638
50A	2	6.3	9	178	1602
50A	3	6.3	3	392	1176
SC1					
50A	1	8	7	202	1414
50A	2	8	7	198	1386
50A	3	6.3	3	472	1416
P1/P2/P3/P6/P8 (X5)					
50A	1	10	20	186	3720
60B	3	5	185	79	14615
50A	4	10	20	297	5940
P4/P5/P7/P9 (X4)					
50A	1	10	16	186	2976
60B	3	5	148	67	9916
50A	4	10	16	297	4752
PC1					
50A	1	10	8	547	4376
50A	2	10	8	86	688
60B	3	5	49	151	7399
60B	4	5	98	50	4900

RESUMO AÇO CA 50-60			
AÇO	BIT (mm)	COMPR (m)	PESO (kg)
60B	5	368	57
50A	6.3	128	31
50A	8	177	70
50A	10	225	139
Peso Total	60B =		57 kg
Peso Total	50A =		240 kg

PROJETO ESTRUTURAL

OBRA: REFORMA E AMPLIAÇÃO DO POSTO DE SAÚDE E ALOJAMENTO

PROPRIETÁRIO: MUNICÍPIO DE SANTO ANTONIO DO LESTE
CNPJ: 04.217.362.0001-90

ENDEREÇO DA OBRA: ALDEIA ÁGUA LIMPA - RESERVA INDÍGENA UBAWAVE
SANTO ANTONIO DO LESTE - MT

AUTOR DO PROJETO: AMINADALB ALVES DE SOUZA JUNIOR

REPRESENTANTE DO MUNICÍPIO: JOSÉ ARIMATEIA VIEIRA ALVES

ASSUNTO: LOCAÇÃO DOS PILARES E SAPATAS
ARMAÇÃO DOS PILARES E SAPATAS

DATA: 10/08/2022

ESCALA: INDICADA

AV. GOIÁS, 367 - JARDIM STA INÊS
SANTO ANTONIO DO LESTE - MT
FONE: (66) 3488-1080 - CEP 78.628-000