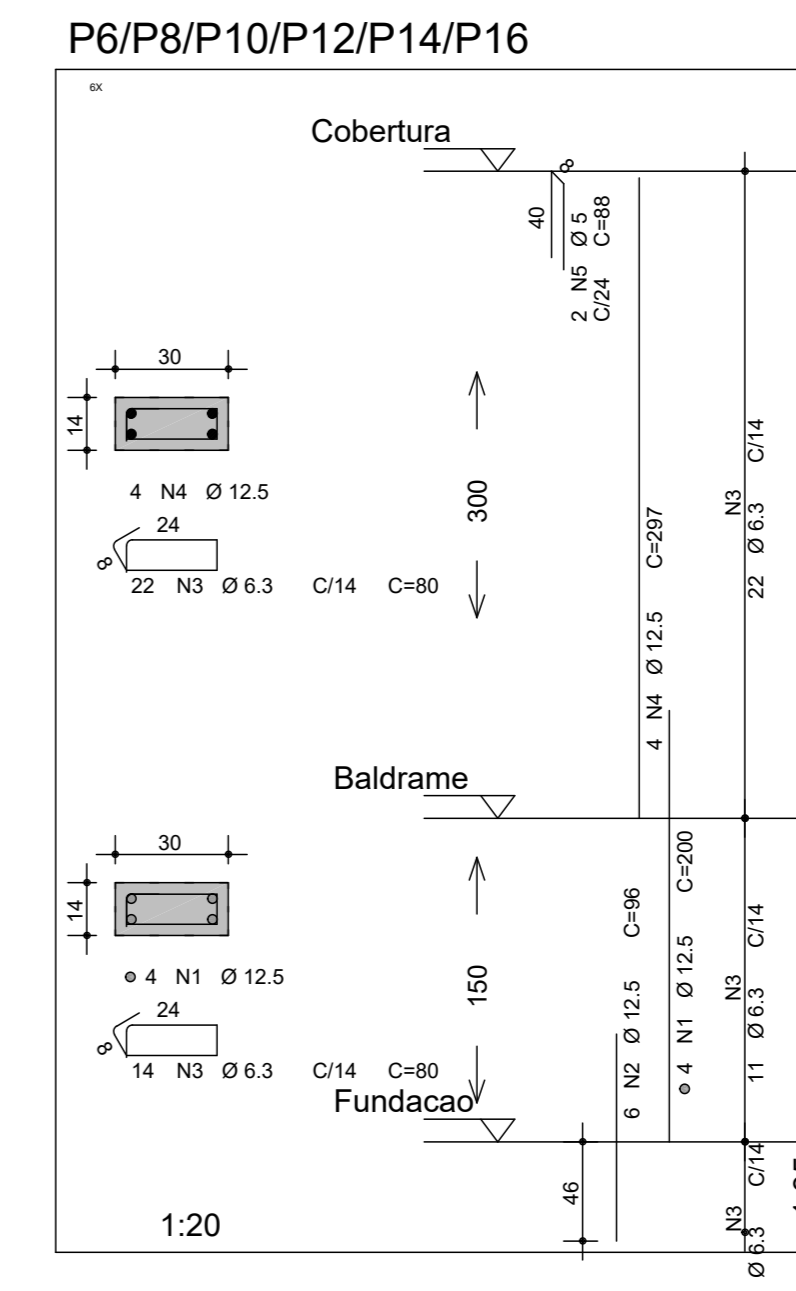
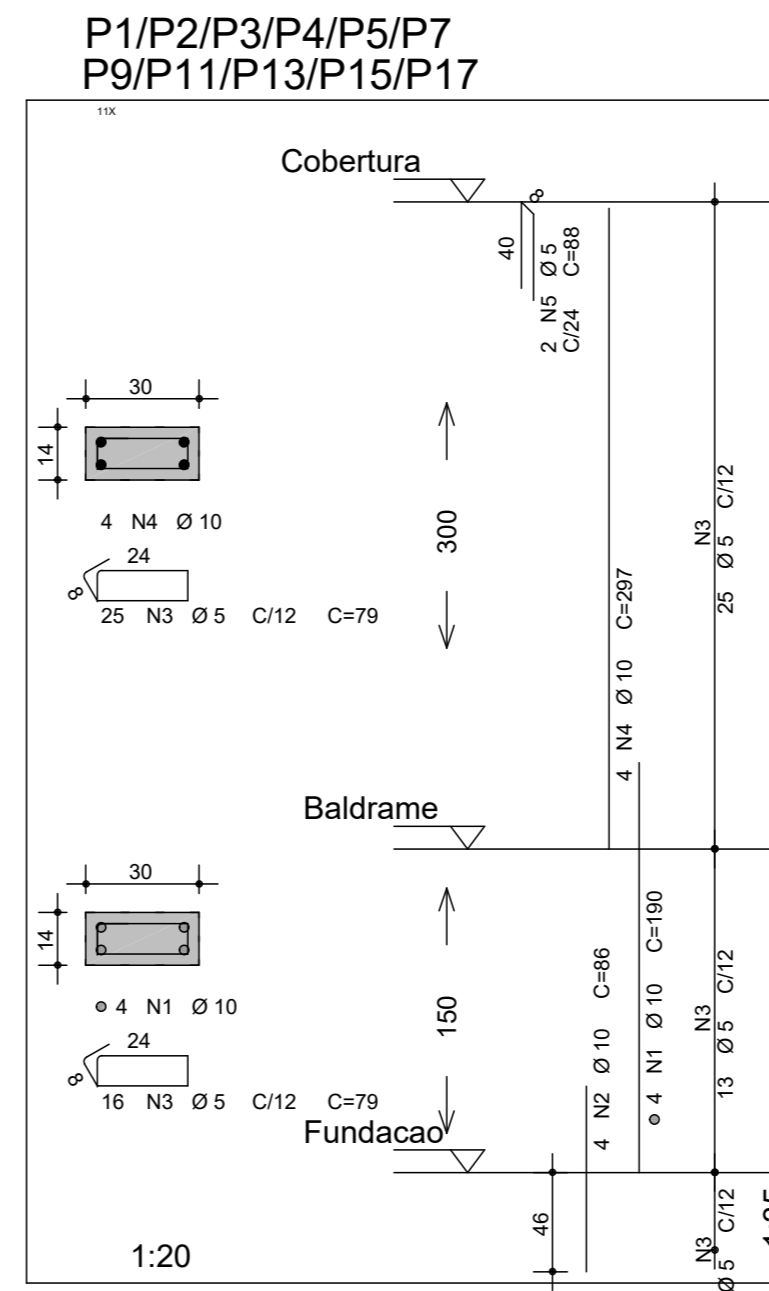
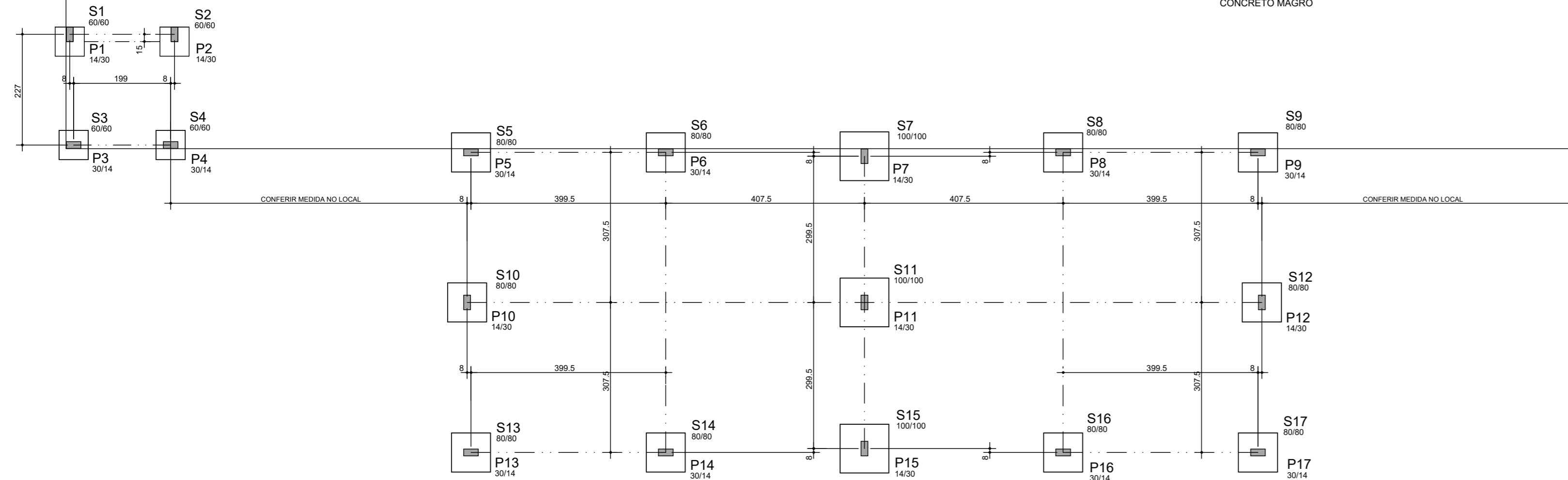
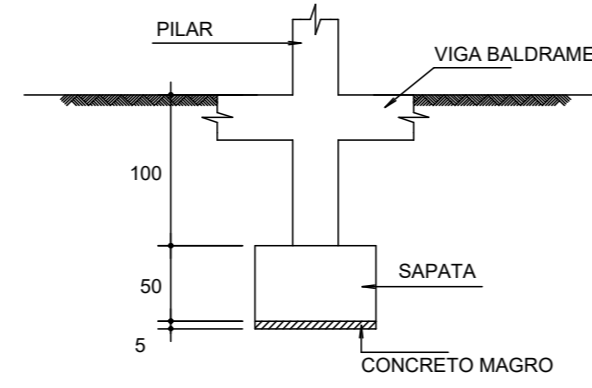


ESCOLA ÁGUA LIMPA - AMPLIAÇÃO  
LOCAÇÃO DOS PILARES E SAPATAS

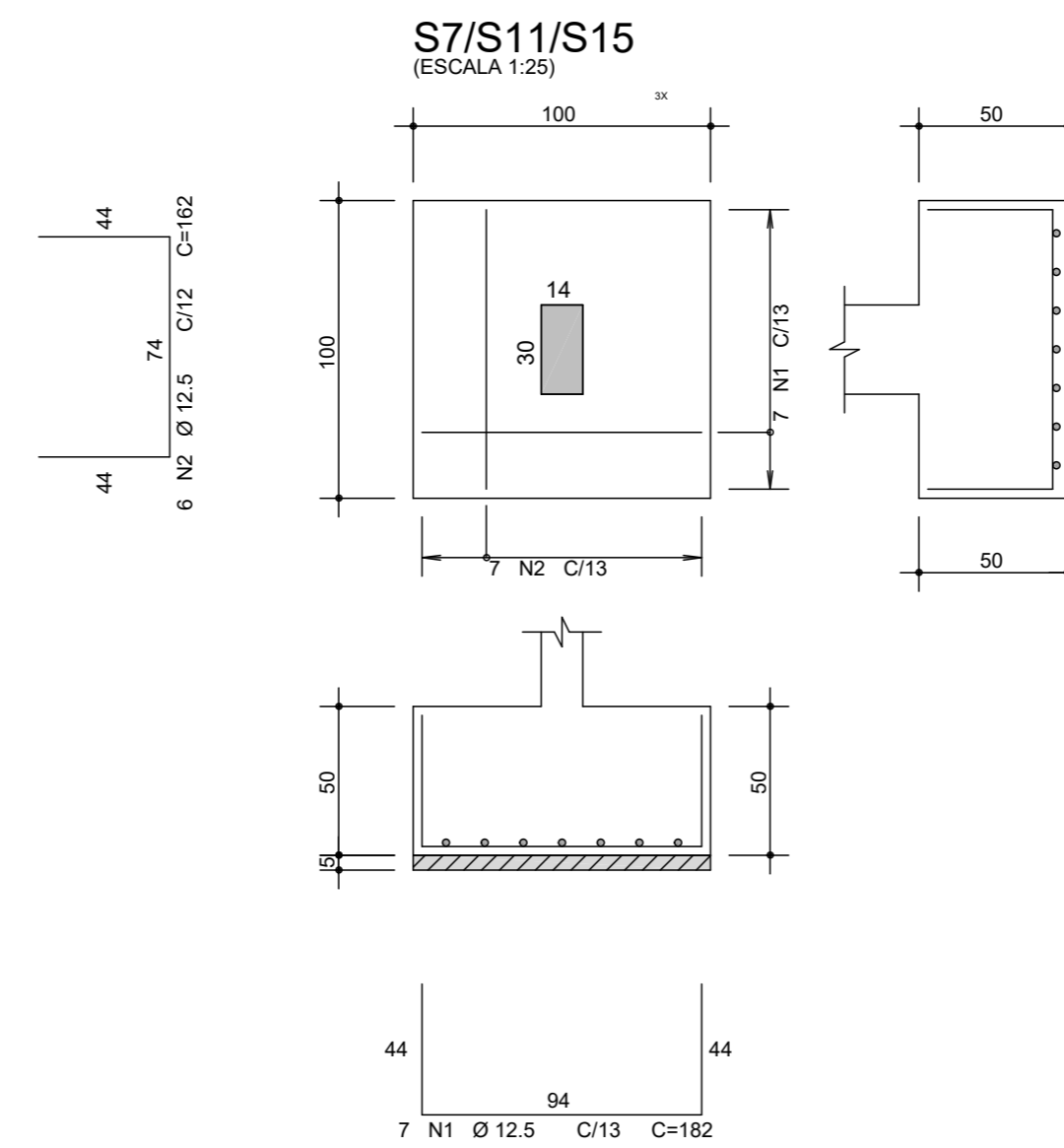
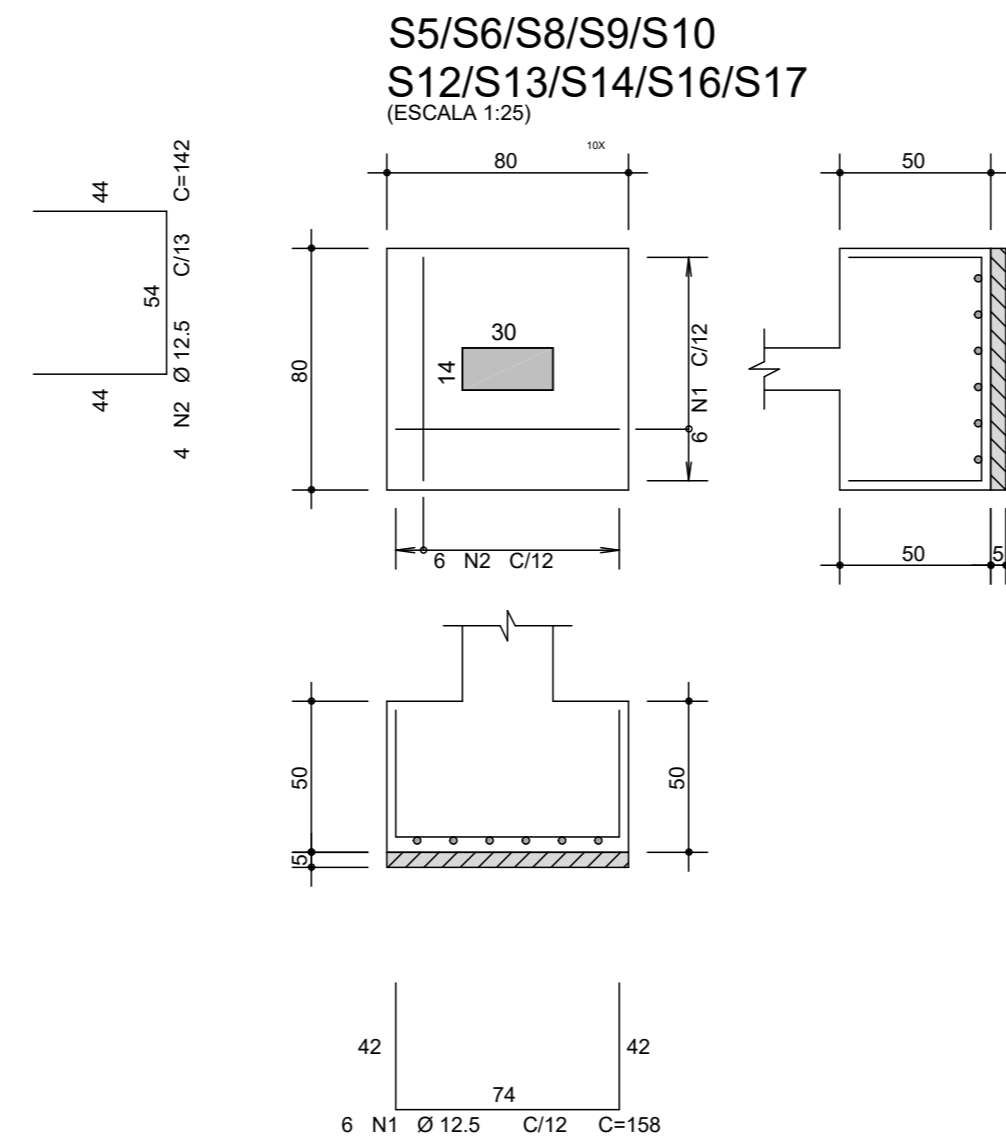
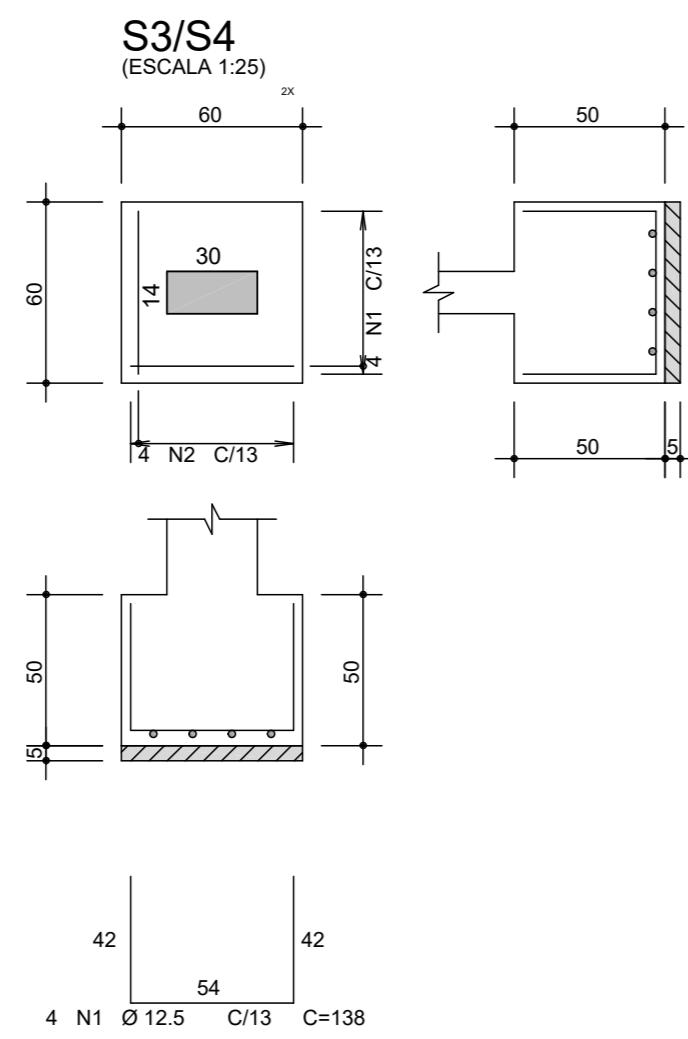
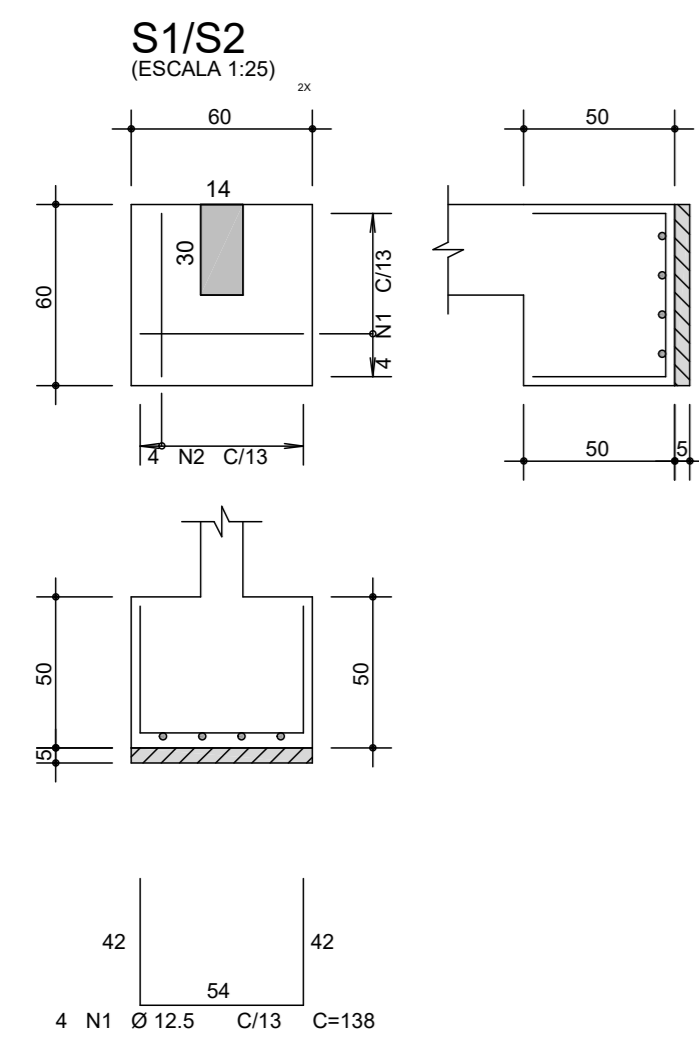
CONSTRUÇÃO EXISTENTE

Quantitativos de Materiais		
	Sapatas	Pilares / Arranques
Área de Formas	26,80 m <sup>2</sup>	14,96 m <sup>2</sup>
Concreto C25	5,42 m <sup>3</sup>	0,714 m <sup>3</sup>
Concreto Magro	0,542 m <sup>3</sup>	-



ACO	POS	BIT (mm)	QUANT	COMPRIMENTO UNIT (cm)	TOTAL (cm)
S1/S2 (X2)	50A	1	12,5	8	138
	50A	2	12,5	8	142
S3/S4 (X2)	50A	1	12,5	8	138
	50A	2	12,5	8	142
S5/S6/S8/S9/S10 (X10)	50A	1	12,5	60	158
	50A	2	12,5	60	162
S7/S11/S15 (X3)	50A	1	12,5	21	182
	50A	2	12,5	21	178
P1/P2/P3/P4/P5/P7 (X11)	50A	1	10	44	190
	50A	2	10	44	86
	60B	3	5	451	79
	50A	4	10	44	297
	60B	5	5	22	88
P6/P8/P10/P12/P14/P16 (X6)	50A	1	12,5	24	200
	50A	2	12,5	36	96
	50A	3	6,3	216	80
	50A	4	12,5	24	297
	60B	5	5	12	88

RESUMO AÇO CA 50-60			
ACO	BIT (mm)	COMPR (m)	PESO (kg)
60B	5	386	59
50A	6,3	173	42
50A	10	252	156
50A	12,5	466	449
Peso Total 60B =			59 kg
Peso Total 50A =			647 kg



PROJETO ESTRUTURAL

OBRA: REFORMA E AMPLIAÇÃO DA ESCOLA ÁGUA LIMPA

PROPRIETÁRIO: MUNICÍPIO DE SANTO ANTONIO DO LESTE  
CNPJ: 04.217.362.0001-90

ENDEREÇO DA OBRA: ALDEIA ÁGUA LIMPA - RESERVA INDÍGENA UBAWAWE  
SANTO ANTONIO DO LESTE - MT

AUTOR DO PROJETO: AMINADALB ALVES DE SOUZA JUNIOR

REPRESENTANTE DO MUNICÍPIO: JOSÉ ARIMATEIA VIEIRA ALVES

ASSUNTO:  
LOCAÇÃO DOS PILARES E SAPATAS  
ARMAÇÃO DOS PILARES E SAPATAS

DATA: 29/07/2022

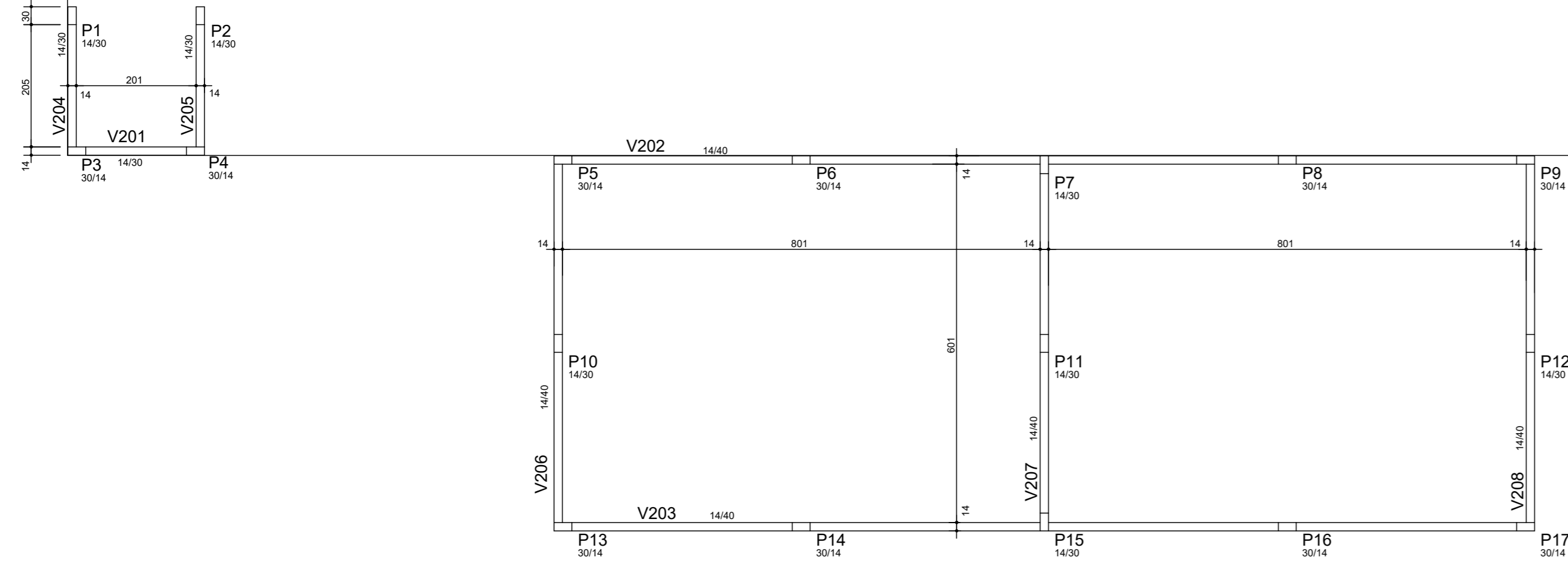
ESCALA: INDICADA

FOLHA Nº  
01

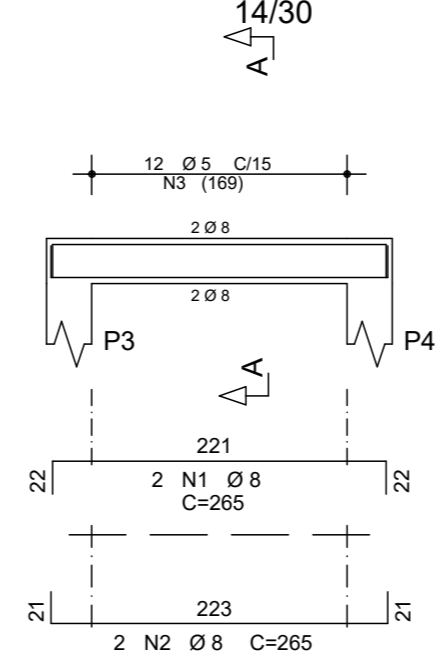
ESCOLA ÁGUA LIMPA - AMPLIAÇÃO  
FORMA DA COBERTURA

CONSTRUÇÃO EXISTENTE

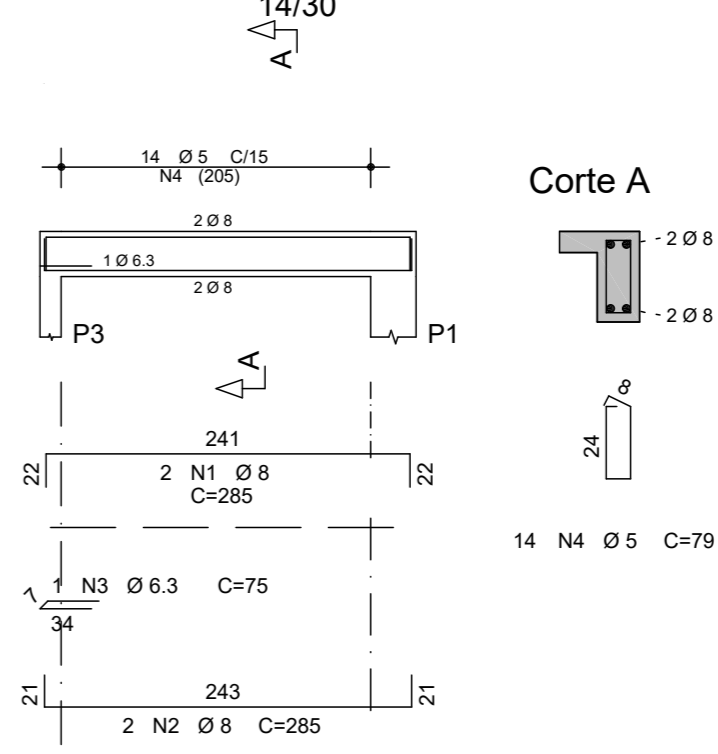
Quantitativos de Materiais		
	Vigas	Pilares
Área de Formas	44,40 m <sup>2</sup>	44,88 m <sup>2</sup>
Concreto C25	2,87 m <sup>3</sup>	2,14 m <sup>3</sup>



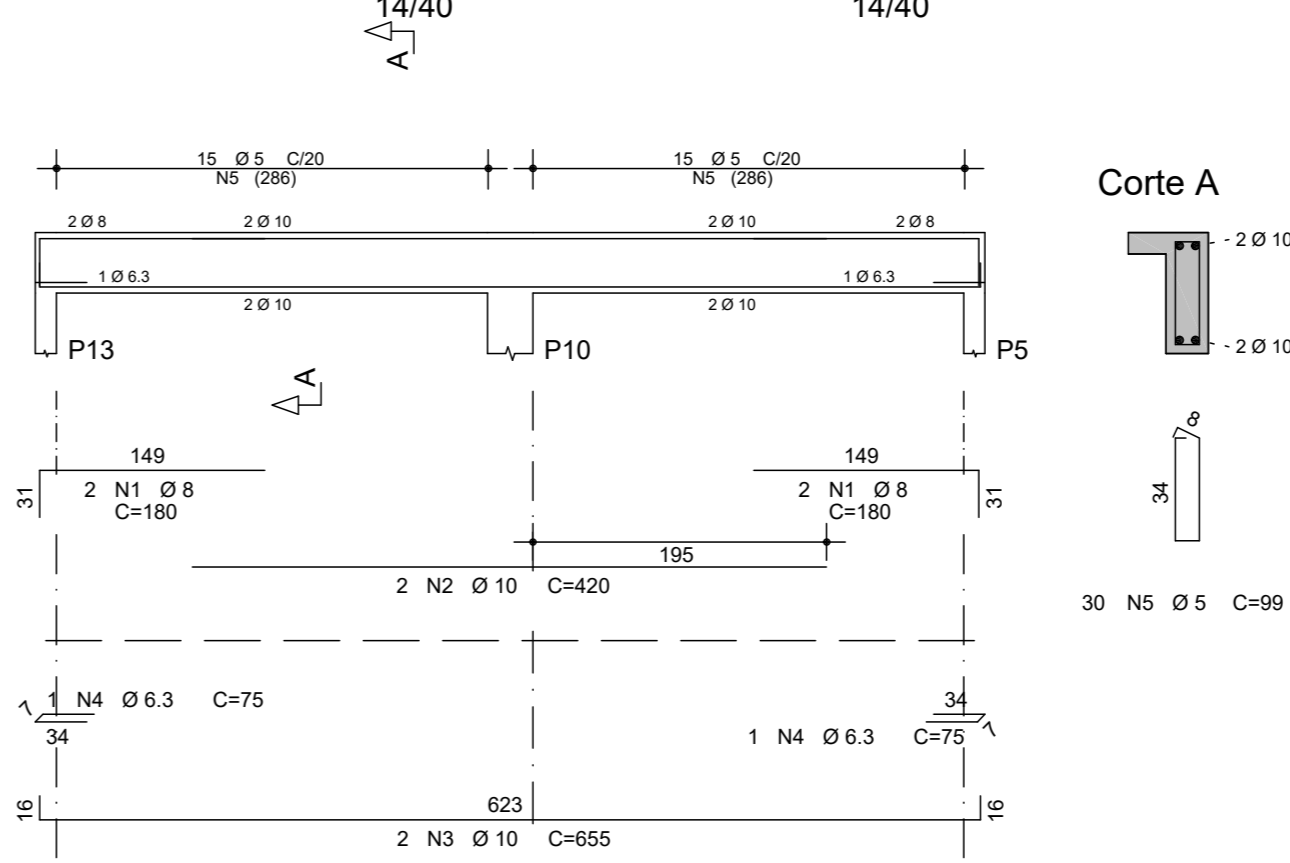
V201



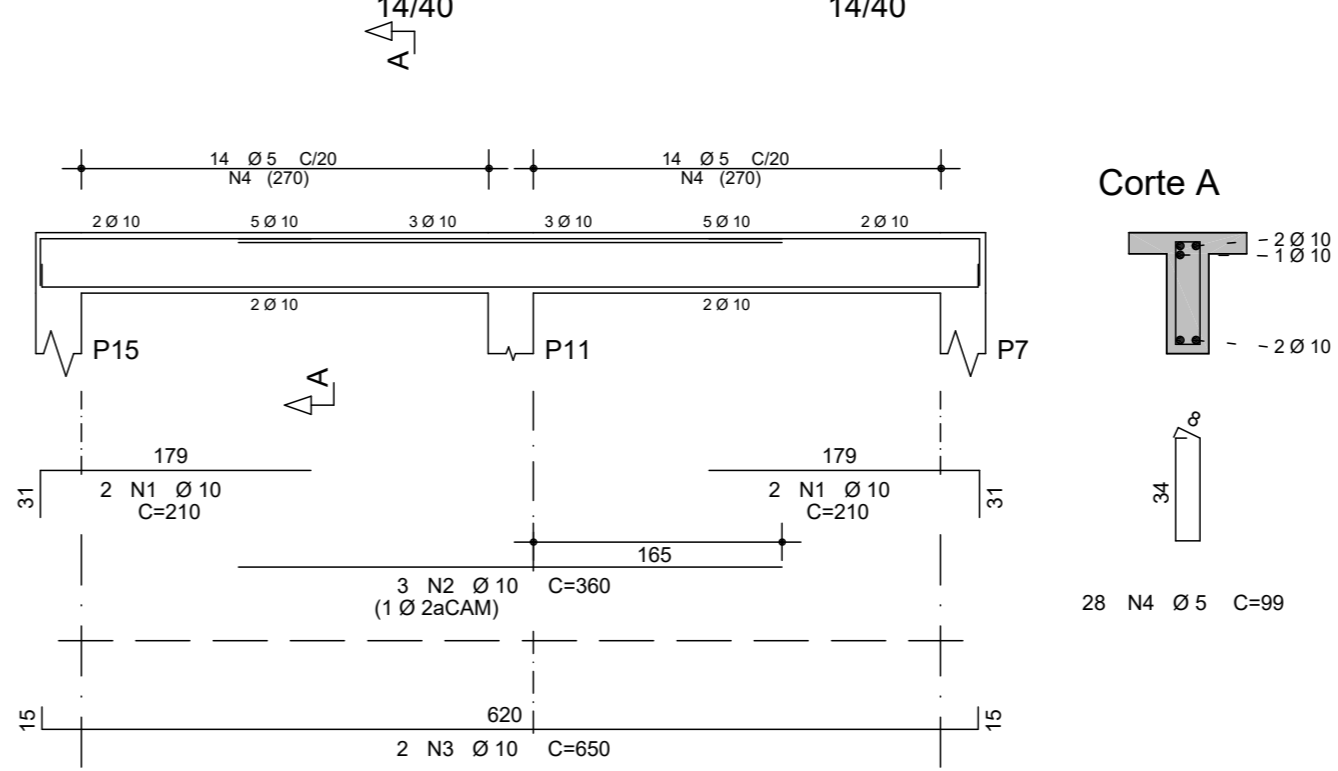
V204/V205



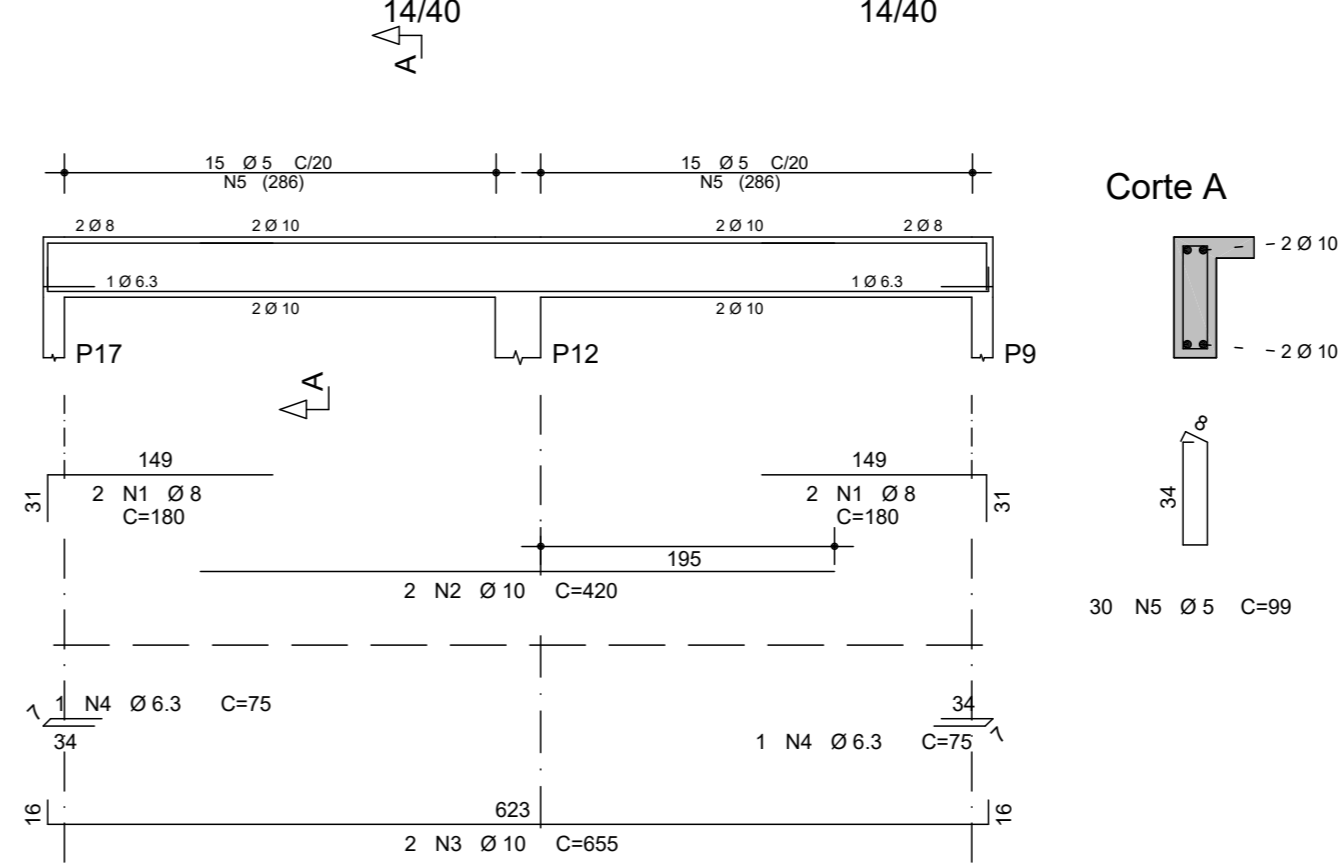
V206



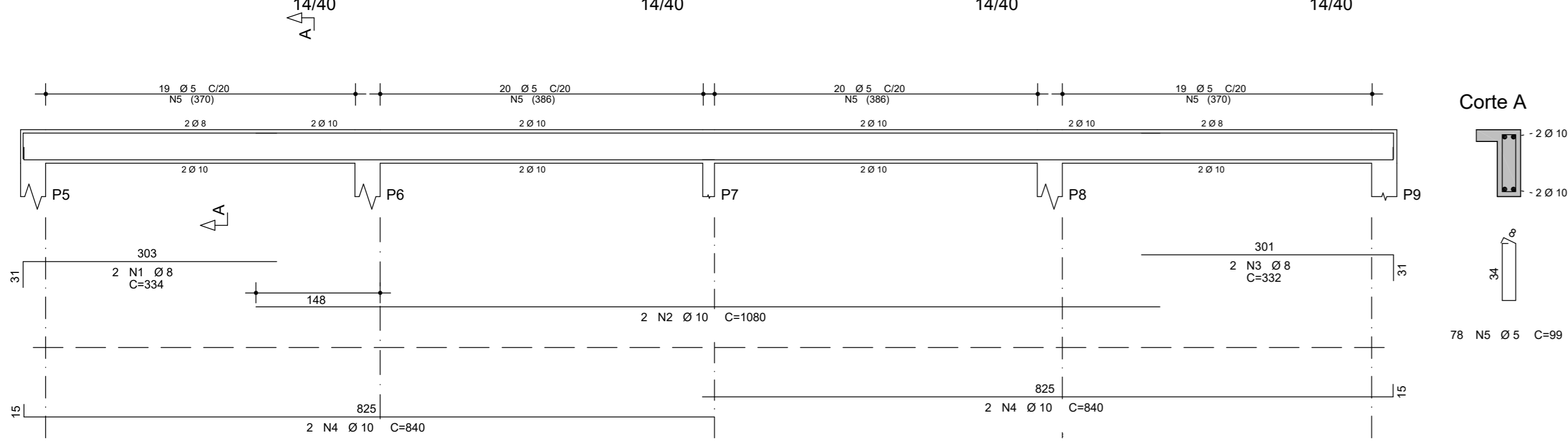
V207



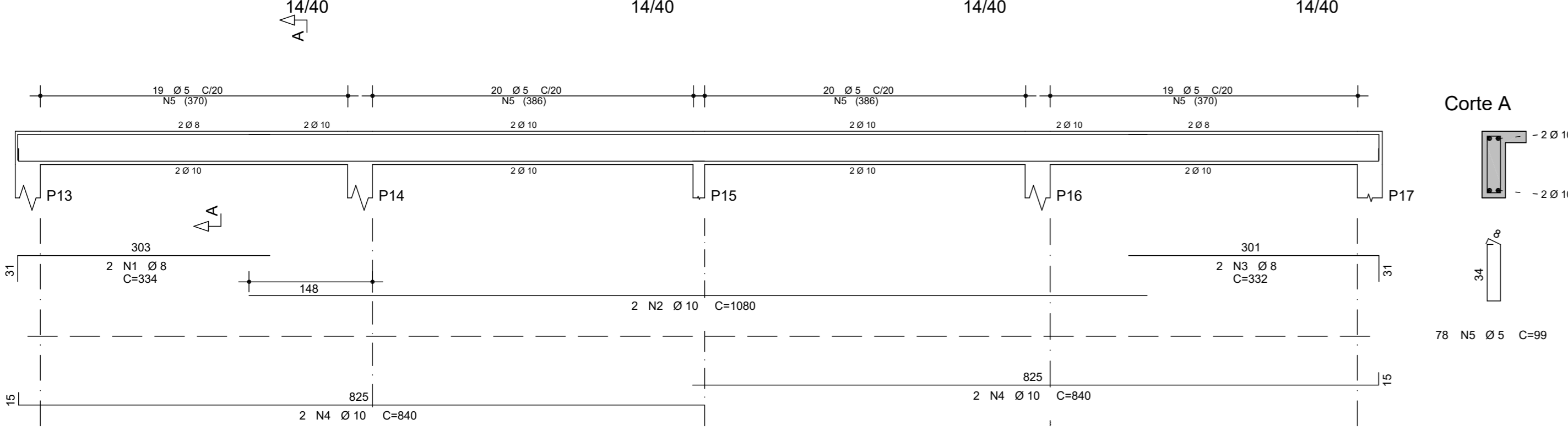
V208



V202



V203



AÇO	POS	BIT (mm)	QUANT	COMPRIMENTO	
				UNIT (cm)	TOTAL (cm)
V201					
50A	1	8	2	265	530
50A	2	8	2	265	530
60B	3	5	12	79	948
V202					
50A	1	8	2	334	668
50A	2	10	2	1080	2160
50A	3	8	2	332	664
50A	4	10	4	840	3360
60B	5	5	78	99	7722
V203					
50A	1	8	2	334	668
50A	2	10	2	1080	2160
50A	3	8	2	332	664
50A	4	10	4	840	3360
60B	5	5	78	99	7722
V204/V205 (X2)					
50A	1	8	4	285	1140
50A	2	8	4	285	1140
50A	3	6.3	2	75	150
60B	4	5	28	79	2212
V206					
50A	1	8	4	180	720
50A	2	10	2	420	840
50A	3	10	2	655	1310
50A	4	6.3	2	75	150
60B	5	5	30	99	2970
V207					
50A	1	10	4	210	840
50A	2	10	3	360	1080
50A	3	10	2	650	1300
60B	4	5	28	99	2772
V208					
50A	1	8	4	180	720
50A	2	10	2	420	840
50A	3	10	2	655	1310
50A	4	6.3	2	75	150
60B	5	5	30	99	2970

RESUMO AÇO CA 50-60			
AÇO	BIT (mm)	COMPR (m)	PESO (kg)
60B	5	273	42
50A	6.3	5	1
50A	8	74	29
50A	10	186	115
Peso Total 60B =		42 kg	
Peso Total 50A =		145 kg	

PROJETO ESTRUTURAL

OBRA: REFORMA E AMPLIAÇÃO DA ESCOLA ÁGUA LIMPA  
 PROPRIETÁRIO: MUNICÍPIO DE SANTO ANTONIO DO LESTE  
 CNPJ: 04.217.362.0001-90  
 ENDEREÇO DA OBRA: ALDEIA ÁGUA LIMPA - RESERVA INDÍGENA UBAWAWE  
 SANTO ANTONIO DO LESTE - MT  
 AUTOR DO PROJETO: AMINADALB ALVES DE SOUZA JUNIOR  
 REPRESENTANTE DO MUNICÍPIO: JOSÉ ARIMATEIA VIEIRA ALVES

ASSUNTO:  
FORMA DA COBERTURA  
ARMAÇÃO DAS VIGAS

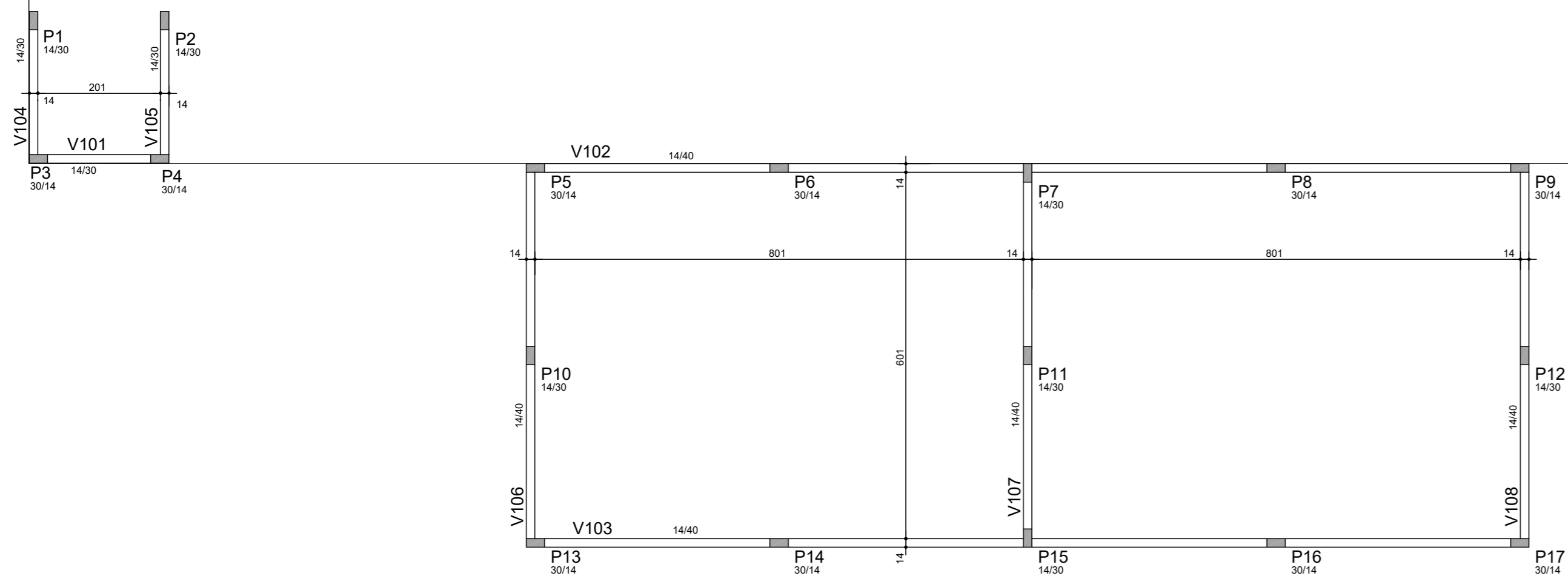
DATA: 29/07/2022  
 ESCALA: INDICADA

FOLHA Nº 03

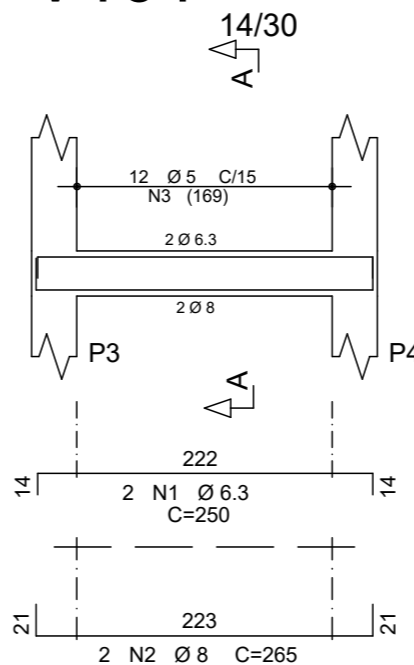
ESCOLA ÁGUA LIMPA - AMPLIAÇÃO  
FORMA DOS BALDRAMES

CONSTRUÇÃO EXISTENTE

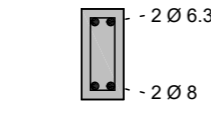
Quantitativos de Materiais	
	Vigas
Área de Formas	48,47 m <sup>2</sup>
Concreto C25	2,87 m <sup>3</sup>



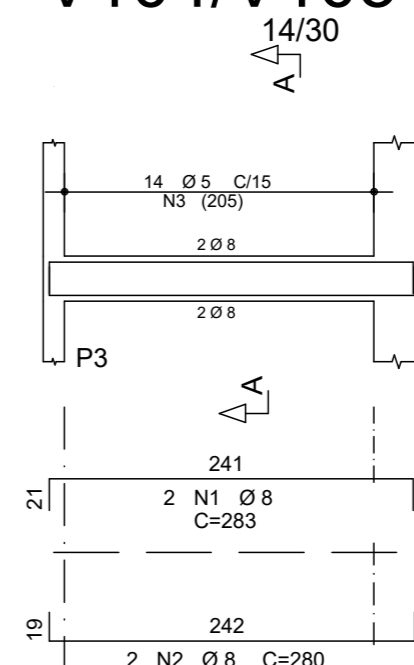
V101



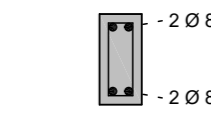
Corte A



V104/V105



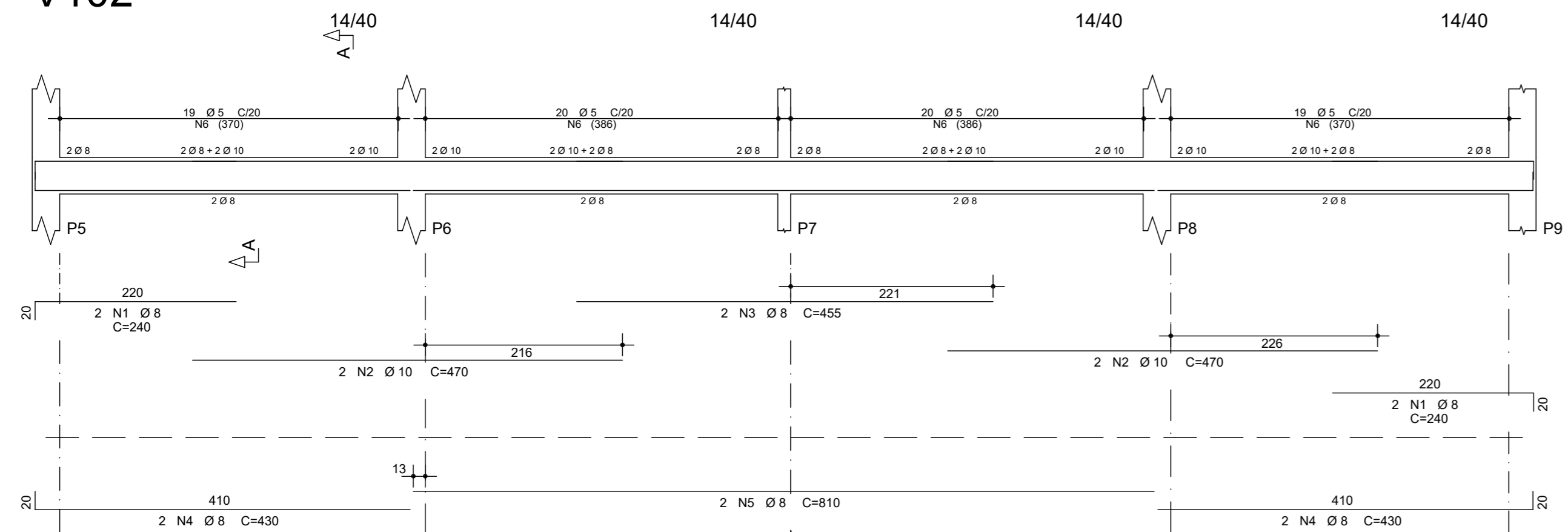
Corte A



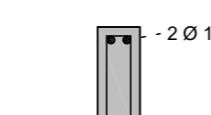
AÇO	POS	BIT (mm)	QUANT	COMPRIMENTO	
				UNIT (cm)	TOTAL (cm)
<b>V101</b>					
50A	1	6.3	2	250	500
50A	2	8	2	265	530
60B	3	5	12	79	948
<b>V102</b>					
50A	1	8	4	240	960
50A	2	10	4	470	1880
50A	3	8	2	455	910
50A	4	8	4	430	1720
50A	5	8	2	810	1620
60B	6	5	78	99	7722
<b>V103</b>					
50A	1	8	4	240	960
50A	2	10	4	470	1880
50A	3	8	2	455	910
50A	4	8	4	430	1720
50A	5	8	2	810	1620
60B	6	5	78	99	7722
<b>V104/V105 (X2)</b>					
50A	1	8	4	283	1132
50A	2	8	4	280	1120
60B	3	5	28	79	2212
<b>V106</b>					
50A	1	8	4	180	720
50A	2	10	2	420	840
50A	3	8	4	330	1320
50A	4	6.3	2	75	150
60B	5	5	30	99	2970
<b>V107</b>					
50A	1	10	2	685	1370
50A	2	8	4	330	1320
60B	3	5	28	99	2772
<b>V108</b>					
50A	1	8	4	180	720
50A	2	10	2	420	840
50A	3	8	4	330	1320
50A	4	6.3	2	75	150
60B	5	5	30	99	2970

RESUMO AÇO CA 50-60			
AÇO	BIT (mm)	COMPR (m)	PESO (kg)
60B	5	273	42
50A	6.3	8	2
50A	8	186	73
50A	10	68	42
Peso Total 60B =			42 kg
Peso Total 50A =			117 kg

V102

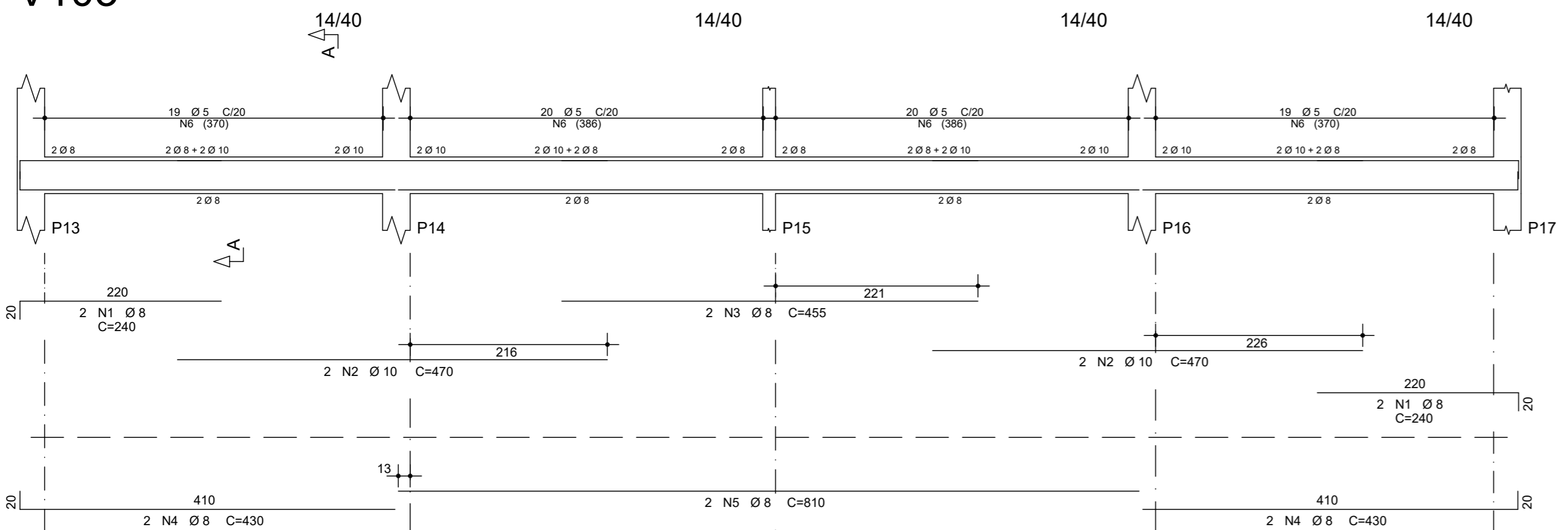


Corte A

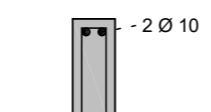


78 N6 Ø5 C=99

V103

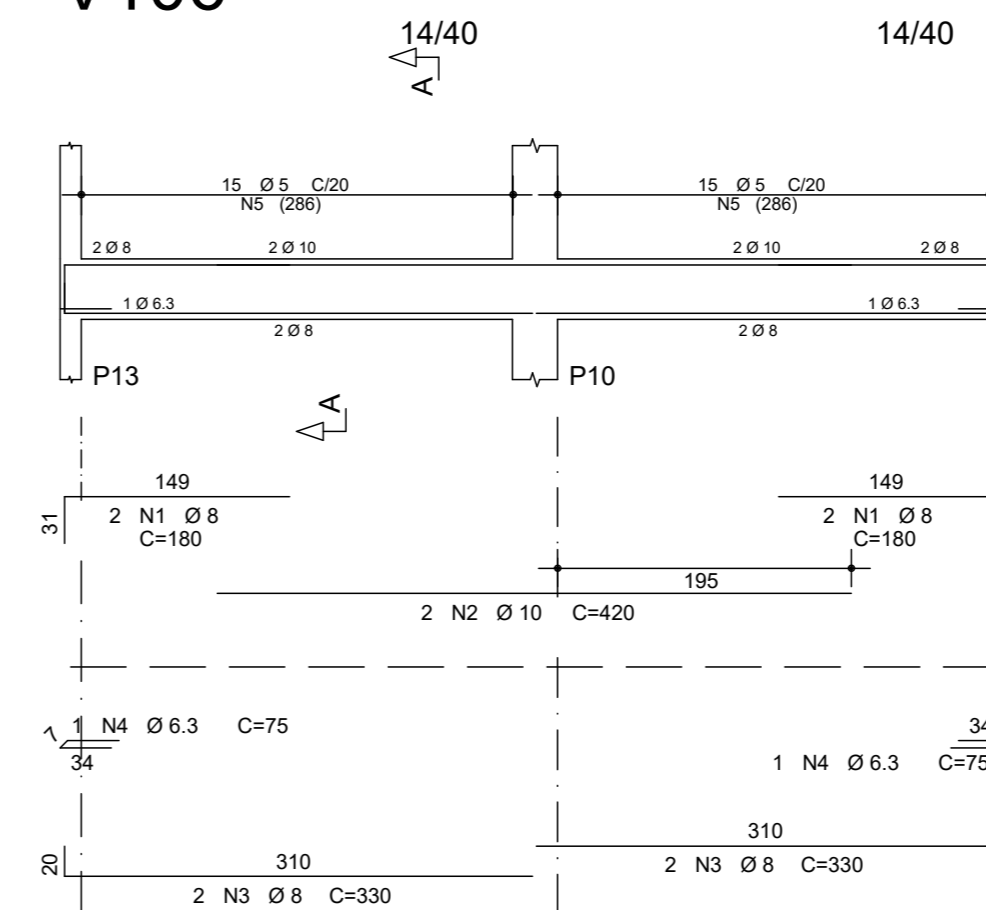


Corte A

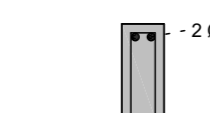


78 N6 Ø5 C=99

V106

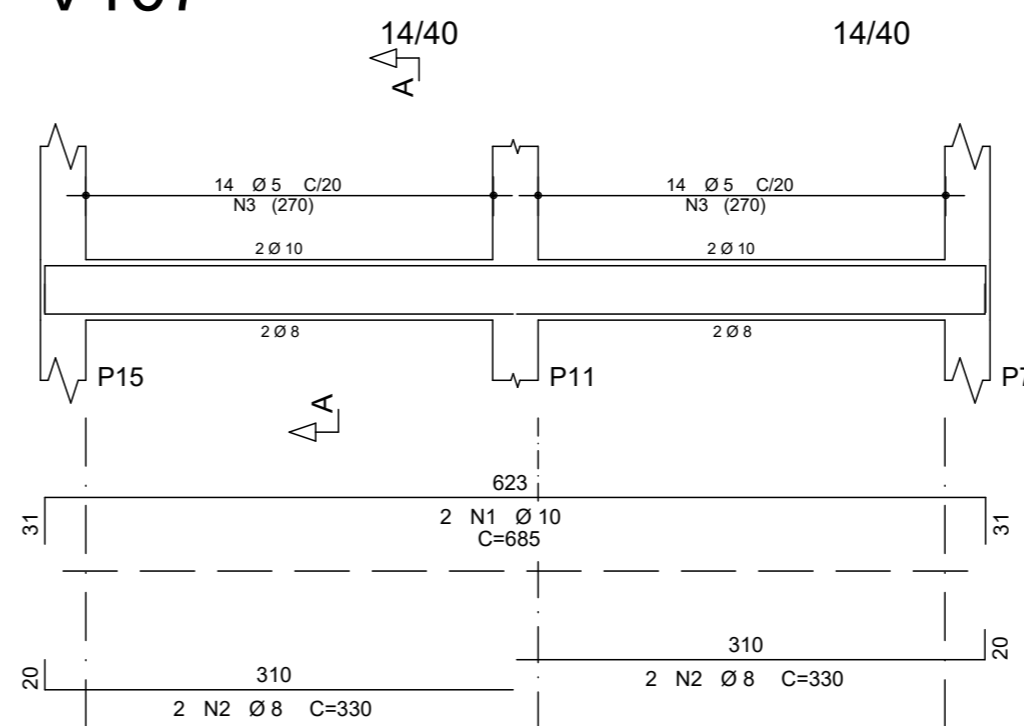


Corte A

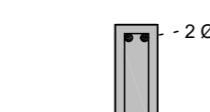


30 N5 Ø5 C=99

V107

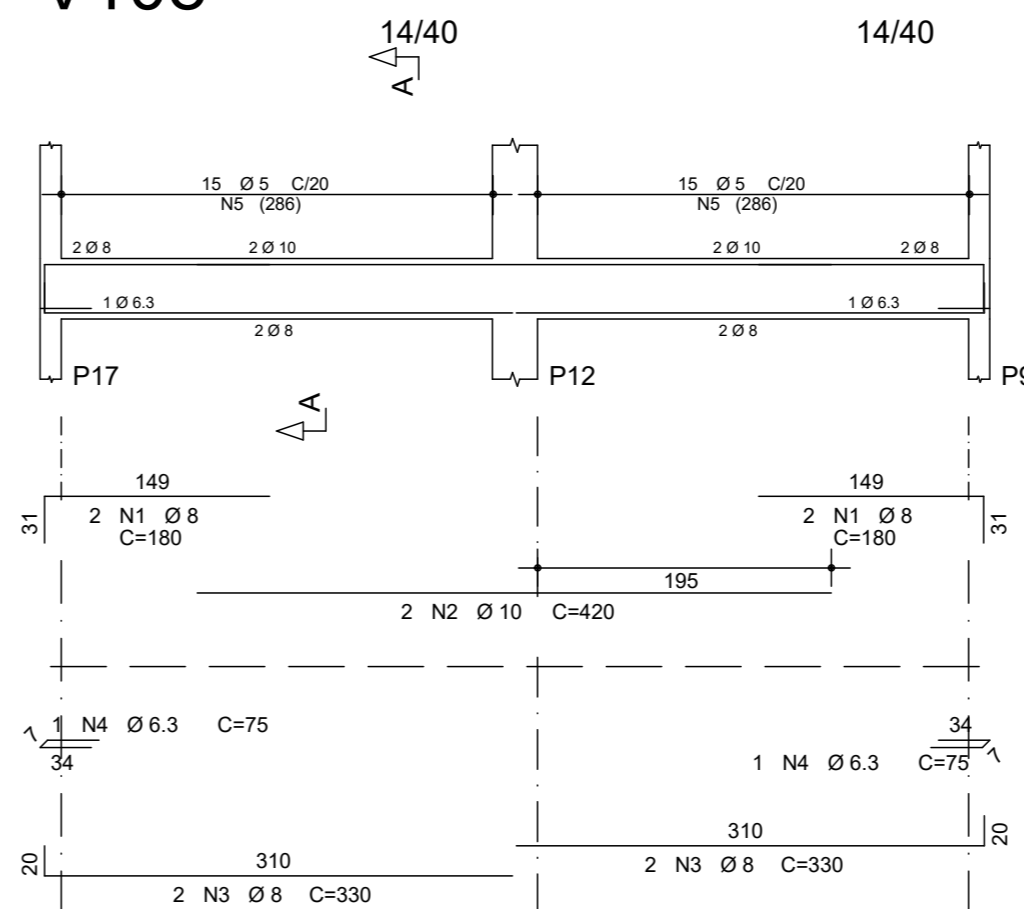


Corte A

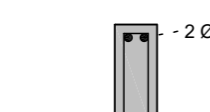


28 N3 Ø5 C=99

V108



Corte A



30 N5 Ø5 C=99

PROJETO ESTRUTURAL

OBRA: REFORMA E AMPLIAÇÃO DA ESCOLA ÁGUA LIMPA

PROPRIETÁRIO: MUNICÍPIO DE SANTO ANTONIO DO LESTE  
CNPJ: 04.217.362.0001-90

ENDEREÇO DA OBRA: ALDEIA ÁGUA LIMPA - RESERVA INDÍGENA UBAWAVE  
SANTO ANTONIO DO LESTE - MT

AUTOR DO PROJETO: AMINADALB ALVES DE SOUZA JUNIOR

REPRESENTANTE DO MUNICÍPIO: JOSÉ ARIMATEIA VIEIRA ALVES

ASSUNTO:  
FORMA DOS BALDRAMES  
ARMAÇÃO DAS VIGAS

DATA: 29/07/2022

ESCALA: INDICADA

FOLHA Nº

02